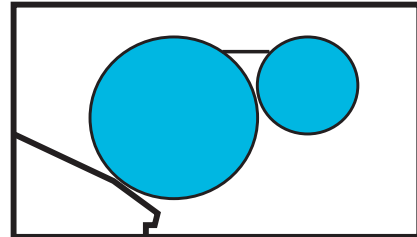


Date of Installation : _____

Unit Serial Number : _____

Kompac Dealer : _____
PRINTERS PARTS
800-543-1117 201-935-9595
fax 800-392-4072 201-935-5333
www.ppsnj.com

VARN
Kompac[®]



MODEL : AF17/17G
PARTS CATALOG # 90234 REV.A

AF 17/17G PARTS CATALOG

P/N 90234

PRINTERS PARTS

800-543-1117 201-935-9595

fax 800-392-4072 201-935-5333

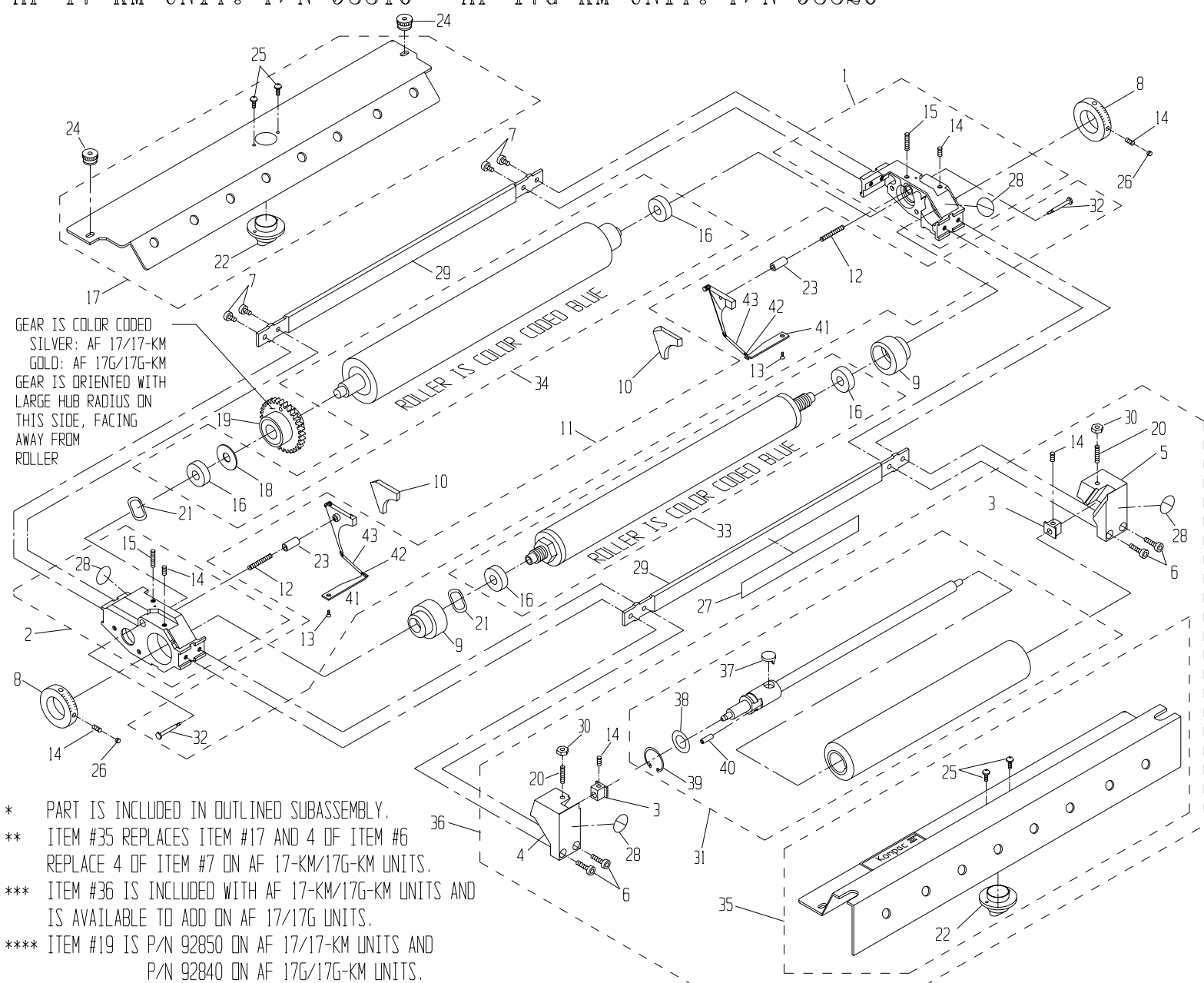
www.ppsnj.com

REV	DESCRIPTION	ECN	BY	DATE
A	UPDATED TO NEW PARTS CATALOG FORMAT	1120	MJC	7-24-95

AF 17 UNIT: P/N 93100
 AF 17-KM UNIT: P/N 93310

AF 17G UNIT: P/N 93080
 AF 17G-KM UNIT: P/N 93320

PARTS CATALOG #90234 REV 2



GEAR IS COLOR CODED
 SILVER: AF 17/17-KM
 GOLD: AF 17G/17G-KM
 GEAR IS ORIENTED WITH
 LARGE HUB RADIUS ON
 THIS SIDE, FACING
 AWAY FROM
 ROLLER

* PART IS INCLUDED IN OUTLINED SUBASSEMBLY.
 ** ITEM #35 REPLACES ITEM #17 AND 4 OF ITEM #6
 REPLACE 4 OF ITEM #7 ON AF 17-KM/17G-KM UNITS.
 *** ITEM #36 IS INCLUDED WITH AF 17-KM/17G-KM UNITS AND
 IS AVAILABLE TO ADD ON AF 17/17G UNITS.
 **** ITEM #19 IS P/N 92850 ON AF 17/17-KM UNITS AND
 P/N 92840 ON AF 17G/17G-KM UNITS.

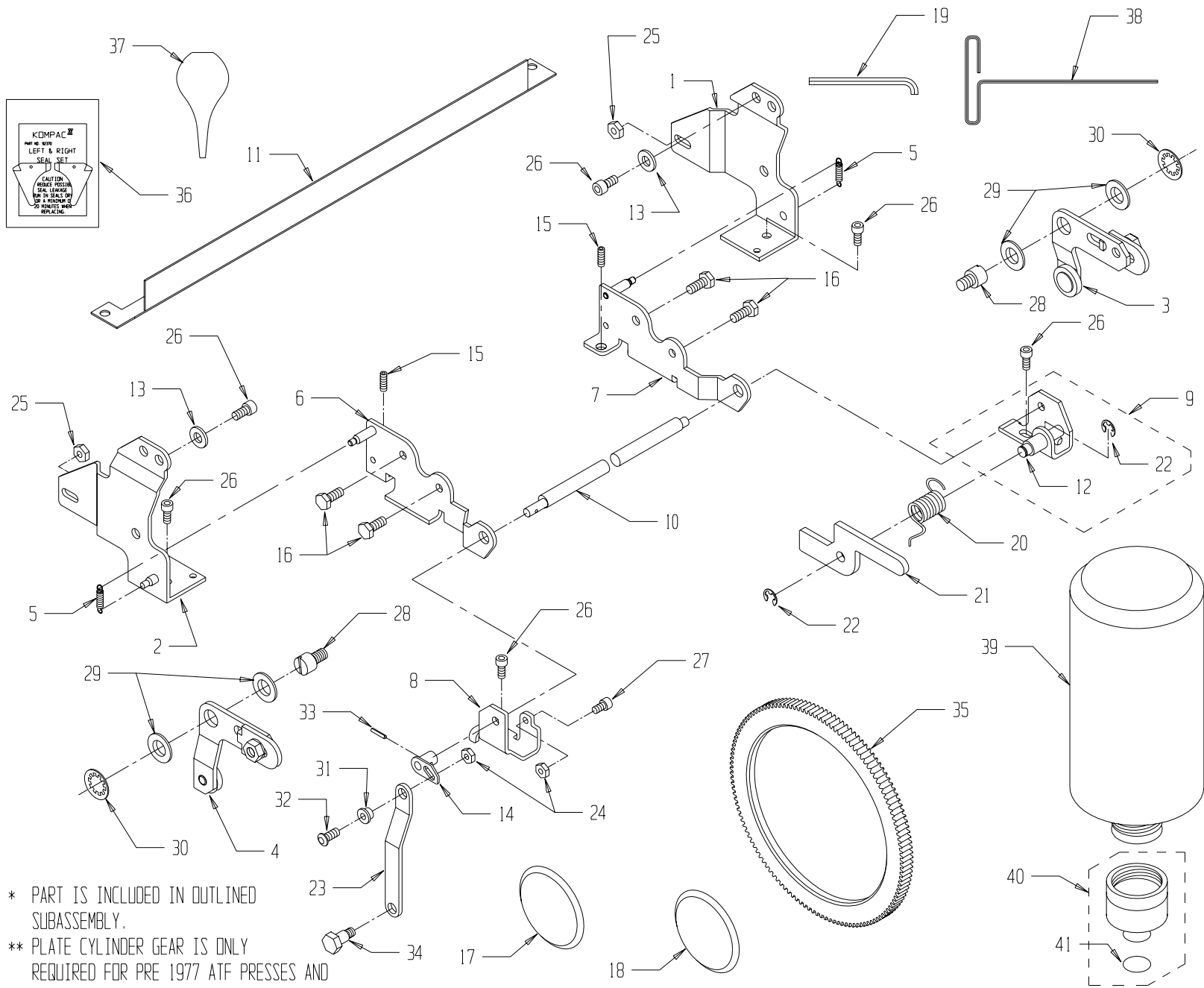
ITEM#	PART #	DESCRIPTION	QTY
43	92259	SPRING COVER	*
42	92236	BACKING PLATE TAB SPRING	*
41	92234	BACKING PLATE TAB	*
40	91949	SPRING PIN	*
49	91997	OSC. RETAINING CLIP	*
48	91965	OSC. RETAINING WASHER	*
37	91111	OSC. DRIVE SHAFT FOLLOWER	*
36	96520	KOLORMATE MODEL 20	***
35	91320	11" OSC COVER ASSY	**
34	92410	11" FORM ROLLER W/B	1
33	92400	11" METERING ROLLER W/B	1
32	92303	SHOULDER SCREW	*
31	91302	11" OSC. PARTS ASSY	1

30	91982	#10-32 NUT	2
29	92492	11" TIE BAR	2
28	92601	INWARD NIP SYMBOL	2*
27	92494	WARNING DECAL	1
26	91810	#10-24 X 1/8 SLOT SET SCW	2
25	91806	#6-32 X 3/8 PHILLIPS HD SCW	*
24	92691	COVER NUT	2
23	92304	GUIDE PIN	*
22	92604	NOZZLE	*
21	92491	WAVE WASHER	2
20	91851	#10-32 x 1 SET SCREW	2
19	****	GEAR CLUTCH ASSY	1
18	92415	THRUST WASHER	*
17	92600	11" COVER ASSEMBLY	**
16	92401	BEARING	*

15	91814	#10-24 X 3/4 STUD	*
14	91811	#10-24 X 1/4 SET SCREW	4*
13	91802	#3-48 X 1/4 FLAT HD SCREW	*
12	92238	COMPRESSION SPRING	*
11	92290	BACKING PLATE KIT (L & R)	1
10	92370	SEAL SET (L & R)	1
9	92291	ECCENTRIC	2
8	92222	METERING GAUGE	2
7	91818	#10-24 x 3/8 SOCKET HD SCREW	8**
6	91829	#10-24 x 11/16 SDC HD SCREW	4**
5	91017	R.H. OSC. END BLOCK	1
4	91018	L.H. OSC. END BLOCK	1
3	91219	ALIGNMENT BLOCK	2
2	92210	L.H. END FRAME ASSY	1
1	92200	R.H. END FRAME ASSY	1

AF 17/17G BRACKET KIT: P/N 93720

PARTS CATALOG #90234 REV A



* PART IS INCLUDED IN OUTLINED SUBASSEMBLY.
 ** PLATE CYLINDER GEAR IS ONLY REQUIRED FOR PRE 1977 ATF PRESSES AND IS NOT INCLUDED WITH BRACKET KIT (P/N 93720).

ITEM#	PART #	DESCRIPTION	QTY
PRE 1978 1/4" PLATE CYL GEAR			
POST 1978 3/8" PLATE CYL GEAR			
41	92765	O-RING	*
40	92760	DISPENSING VALVE ASSY	1
39	92771	CALIBRATED BOTTLE	1
38	90755	3/32" T-WRENCH	1
37	92778	KOMPAC SYRINGE	1
36	92370	KOMPAC SEAL SET (L & R)	1
35	92855	PLATE CYLINDER GEAR	**
34	93752	LOCKOUT SHOULDER SCREW	1
33	91940	3/32 x 1/2 ROLL PIN	1
32	91819	10-24 x 1/2 BUTTON HEAD SCW	1
31	93754	ATF LOCKOUT BUSHING	1

30	91747	CIRCULAR PUSH-ON WASHER	2
29	91739	.442 x .750 WASHER	4
28	90934	THREADED STUD	2
27	91818	10-24x3/8 SOCKET HD CAP SCW	1
26	91875	1/4-20x3/8 SOCKET HD CAP SCW	6
25	91972	1/4-20 LOCK NUT	2
24	91968	10-24 LOCK NUT	1
23	93753	ATF LOCKOUT LINK	2
22	91994	5/16" E-RING	1*
21	93621	PLATE CLAMP PAWL	1
20	93626	PLATE CLAMP SPRING	1
19	93708	3/16" ALLEN WRENCH	1
18	93749	2" DIA. HOLE PLUG	1
17	93748	2-1/8" DIA. HOLE PLUG	1
16	91868	1/4-20 x 3/4 HEX HEAD SCREW	4

15	91850	10-32 x 1/2 SET SCREW	2
14	93710	ATF LEVER ASSY	1
13	91962	#12 WASHER	2
12	93623	PAWL SUPPORT BOLT	*
11	93707	PINCH GUARD	1
10	93751	ATF ECCENTRIC SHAFT	1
9	93686	R.H. PIVOT BRACKET ASSY	1
8	93685	L.H. PIVOT BRACKET ASSY	1
7	93758	R.H. MOUNTING BRACKET ASSY	1
6	93757	L.H. MOUNTING BRACKET ASSY	1
5	93553	EXTENSION SPRING	2
4	90930	OP-SIDE LIFT LINK ASSY	1
3	90940	NON-OP SIDE LIFT LINK ASSY	1
2	93687	L.H. INKER BRACKET	1
1	93688	R.H. INKER BRACKET	1

PRINTERS PARTS
 800-543-1117 201-935-9595
 fax 800-392-4072 201-935-5333
 www.ppsnj.com

TECHNICAL and SERVICE BULLETIN

No. 14
 Date: OCTOBER 1985

KOMPAC II MODELS FOR ATF CHIEF 15 and 17 PRESSES

As stated in the October 1983 Kompac Bulletin: "Before ordering a Kompac II for your Chief customers, you will need the machine serial number. If the serial number has a 3 digit prefix, i.e. xxx-xxxx a "G" version of either the Kompac II 15 or 17 will be required. If the machine serial number has a 2 digit prefix, i.e. xx-xxx you should order the AF-15 model for the 10" x 15" version."

Since the October 1983 bulletin, we are pending release of the AF-17 model. An engineering change requiring the installation of a retrofit plate cylinder gear must accompany those 2 digit prefix machine serial number installations on Chief 17, 117, 217, 117G versions with the Kompac II.

Also be aware, some dealers are rebuilding pre 1978, 2 digit prefixed ATF models, which are Kompac II equipped. If, while upgrading the machine, the drive system is converted to a 20 degree pressure angle gear, that unit will require the Kompac II 15G or 17G gear. Measuring the plate gear width will provide the most expedient means of pressure angle gear identification. Please contact Graph Tech in this event.

Restating the above:

Machine Serial No.	Date	Plate Gear Width	Pressure Angle °	Model	Kompac Model
xx-xxx	pre 1978	1/4"	14-1/2°	ATF 15, 115, 215	15
xx-xxx	pre 1978	1/4"	14-1/2°	ATF 17, 117, 217	17 with K II 3/8" 14 1/2° plate gear
xx-xxx	All	1/4"	14-1/2°	Gestetner 115G, 211, 311	15
xx-xxx	All	1/4"	14-1/2°	Gestetner 117G, 212, 312	17 with K II 3/8" 14 1/2° plate gear
xxx-xxxx	post 1978	3/8"	20°	ATF 15, 115, 215	15G
xxx-xxxx	post 1978	3/8"	20°	ATF 17, 117, 217	17G
xx-xxx	pre 1978	3/8"	20°	Rebuilt pre 1978 Kompac equipped model	15G-17G Kompac II (gear conversion)