

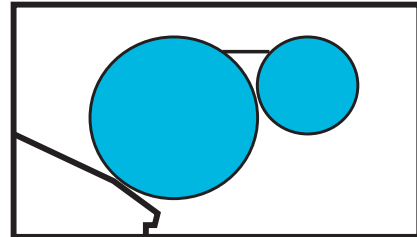
Date of Installation : \_\_\_\_\_

Unit Serial Number : \_\_\_\_\_

Kompac Dealer : \_\_\_\_\_

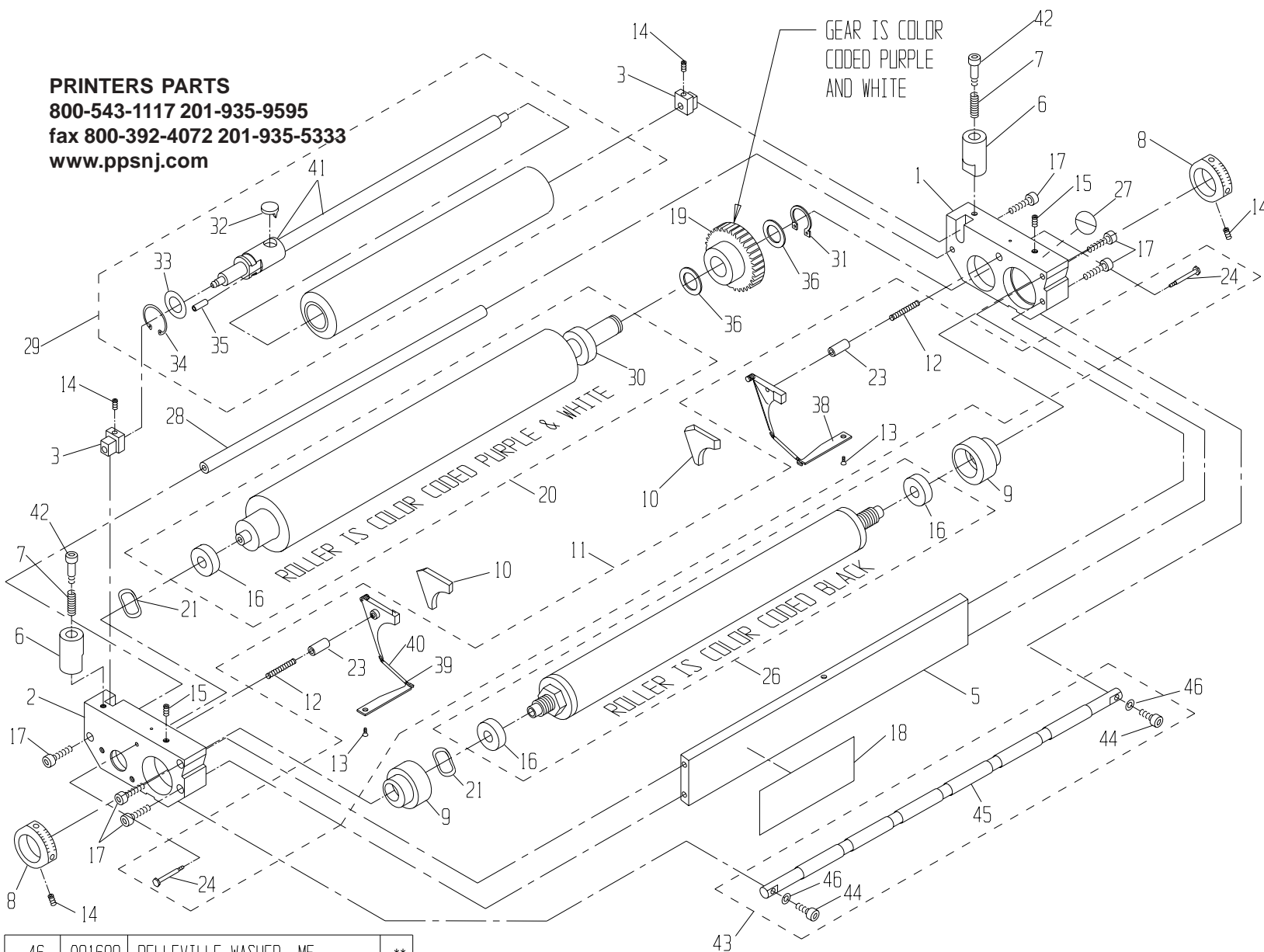
PRINTERS PARTS  
800-543-1117 201-935-9595  
fax 800-392-4072 201-935-5333  
[www.ppsnj.com](http://www.ppsnj.com)

***VARN***  
**Kompac<sup>®</sup>**



**MODEL : HMD-2340R**  
PARTS CATALOG # 90873 REV.B

**PRINTERS PARTS**  
 800-543-1117 201-935-9595  
 fax 800-392-4072 201-935-5333  
 www.ppsnj.com



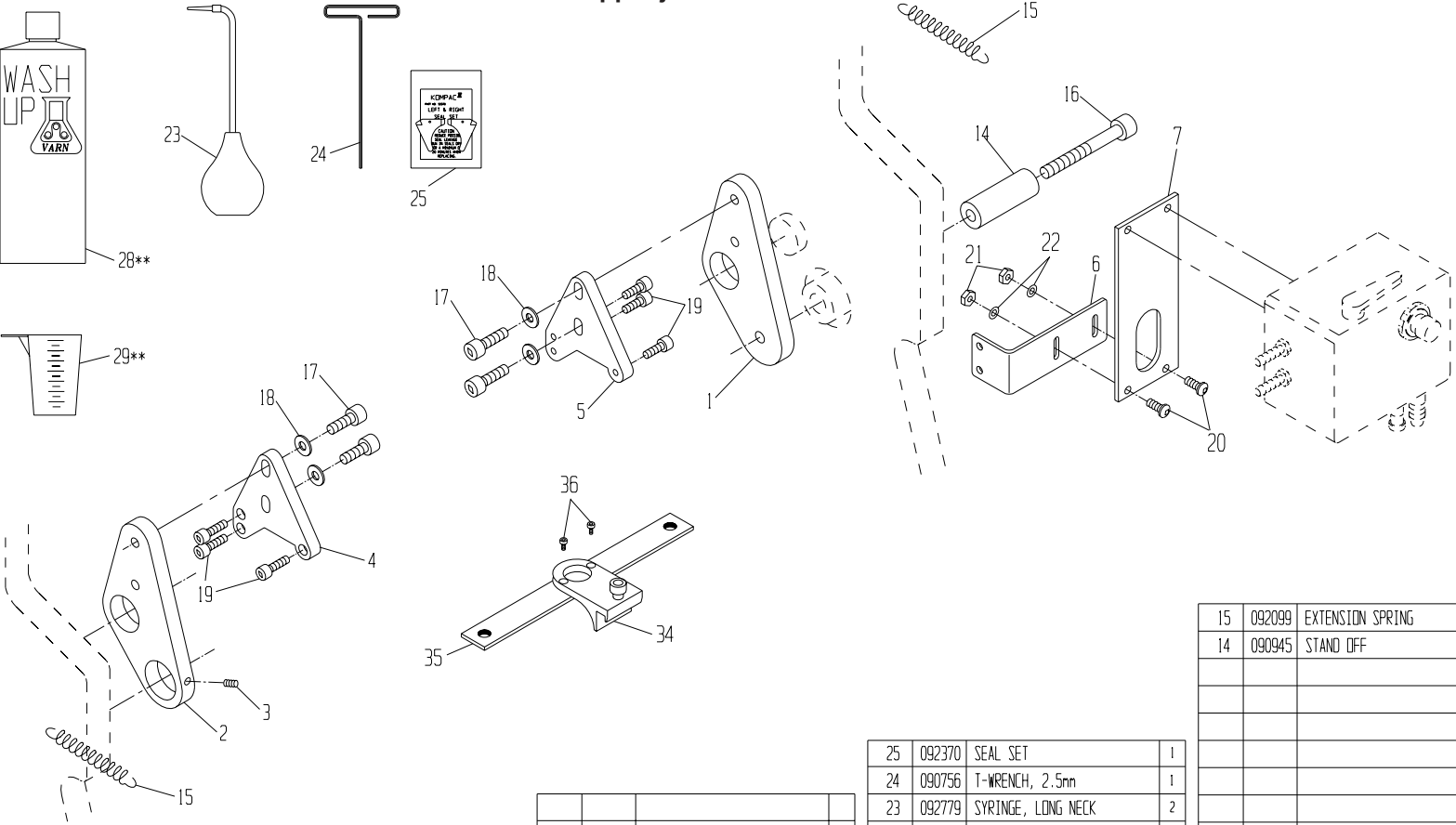
46	091689	BELLEVILLE WASHER, M5	**
45	094365	PLATE GUIDE	**
44	091765	M5x12mm BUTTON HEAD SCREW	**
43	090879	PLATE GUIDE ASSY	**
42	091708	SHOULDER SCREW, 6mm	2
41	091262	SHAFT ASSY, S.S.	*
40	092259	SPRING COVER	*
39	092236	TAB SPRING	*
38	090971	TAB, SHORT	*
36	091966	WASHER, FLAT	2
35	091949	SPRING PIN	*
34	091997	OSC. RETAINING CLIP	*
33	091965	OSC. RETAINING WASHER	*
32	091111	OSC. DRIVE SHAFT FOLLOWER	*
31	091662	RETAINING RING	1
30	092586	BEARING	*
29	081311	13-1/4 OSC. ROLL. PARTS ASSY	1
ITEM#	PART #	DESCRIPTION	QTY

\* ITEM IS INCLUDED WITH OUTLINED SUBASSEMBLY.  
 \*\* ITEM IS NOT INCLUDED WITH P/N 090876.

28	090989	TIE ROD	1
27	092601	SAFETY STICKER	1
26	094240	13-1/4" METERING ROLLER W/B	1
24	092296	SHOULDER SCREW	*
23	092304	GUIDE PIN	*
21	092491	WAVE WASHER	2
20	090973	13-1/4" FORM ROLLER W/B	1
19	090959	GEAR CLUTCH ASSY, HMD-34	1
18	090984	I.D. STICKER (HAMADA)	1
17	091898	M5 x 35mm SOC. HD. SCREW	6
16	092401	BEARING	*
15	091904	M5 x 16mm SET SCREW	2
ITEM#	PART #	DESCRIPTION	QTY

14	091888	M5 x 5mm SET SCREW	4
13	091901	M3 x 6mm SOC HD SCREW	*
12	092238	COMPRESSION SPRING	*
11	090970	BACKING PLATE KIT (HAMADA)	1
10	092370	SEAL SET (L & R)	1
9	092291	ECCENTRIC	2
8	092612	METERING GAUGE	2
7	092007	SPRING, COMPRESSION	2
6	094991	OSCILLATOR POST	2
5	090979	TIE BAR	1
3	090985	ALIGNMENT BLOCK	2
2	090993	L.H. END FRAME	1
1	090994	R.H. END FRAME	1
ITEM#	PART #	DESCRIPTION	QTY

**PRINTERS PARTS**  
**800-543-1117 201-935-9595**  
**fax 800-392-4072 201-935-5333**  
**www.ppsnj.com**



\* PART IS INCLUDED WITH OUTLINED SUBASSEMBLY.  
 \*\* PART IS NOT INCLUDED WITH BRACKET KIT, P/N 090875.

ITEM#	PART #	DESCRIPTION	QTY
34	091807	SCREW, #6-32 x 1/4 CAP	2
35	094736	BRACKET, NOZZLE, KII	1
34	094997	BRACKET, NOZZLE	1

ITEM#	PART #	DESCRIPTION	QTY
29	092783	MEASURING CUP	**
28	092785	WASH-UP BOTTLE	**

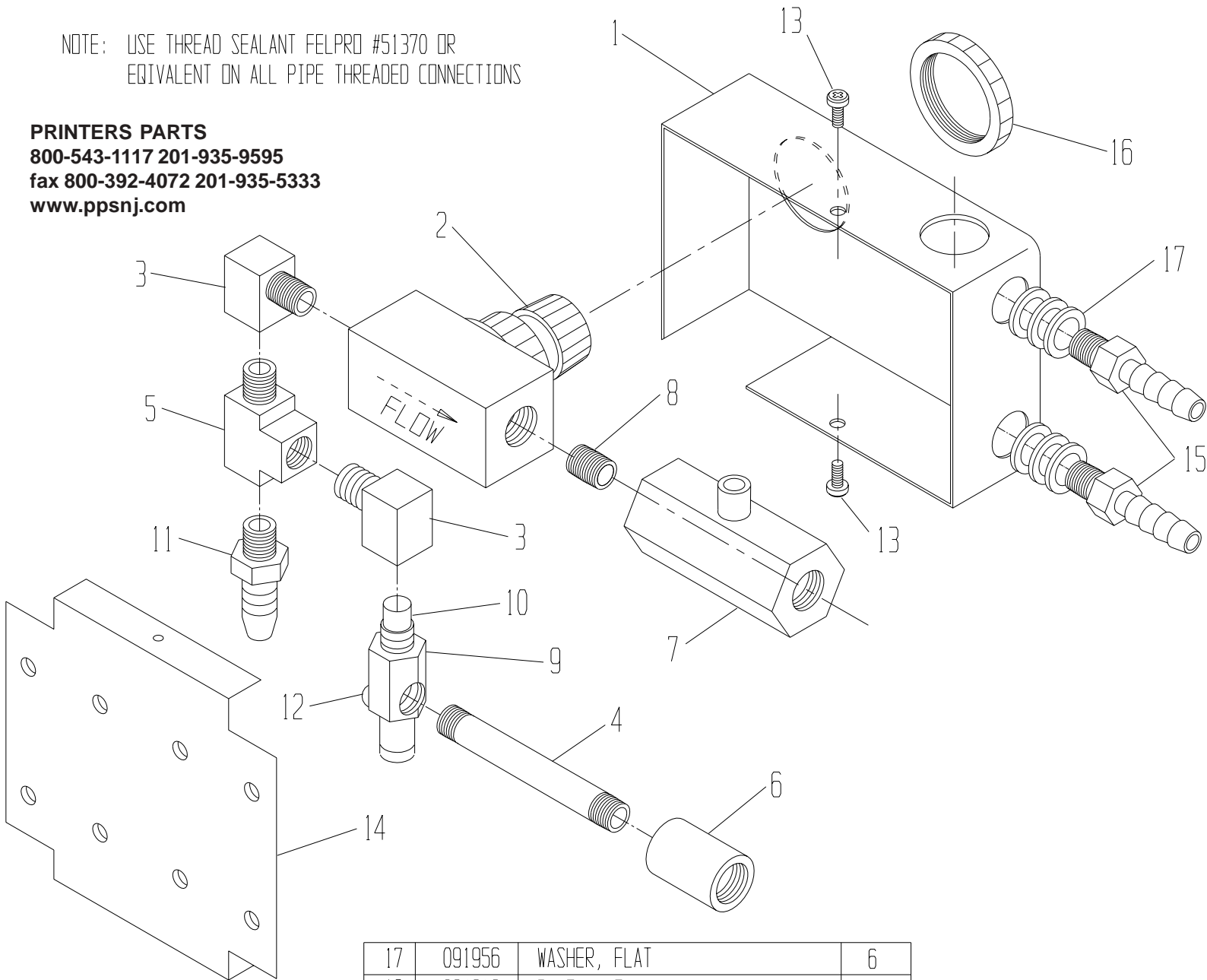
ITEM#	PART #	DESCRIPTION	QTY
25	092370	SEAL SET	1
24	090756	T-WRENCH, 2.5mm	1
23	092779	SYRINGE, LONG NECK	2
22	091978	M5 FLAT WASHER	2
21	091752	M5 NUT	2
20	091765	M5 x 12mm SCREW	2
19	091891	M5 x 16mm SCREW	6
18	091950	WASHER, FLAT	4
17	091758	M8 x 20mm SCREW	4
16	091892	M8 x 35mm SCREW	1

ITEM#	PART #	DESCRIPTION	QTY
15	092099	EXTENSION SPRING	2
14	090945	STAND OFF	1
7	092748	UNIVERSAL BRACKET	1
6	090897	BRACKET, BOTTLE, HMD-234	1
5	090996	UNIT SUPPORT R.H.	1
4	090995	UNIT SUPPORT, L.H.	1
3	091888	M5 x 5mm SET SCREW	1
2	090895	MOUNTING BRKT, L.H.	1
1	090896	MOUNTING BRKT, R.H.	1

NOTE: USE THREAD SEALANT FELPRO #51370 OR  
EQUIVALENT ON ALL PIPE THREADED CONNECTIONS

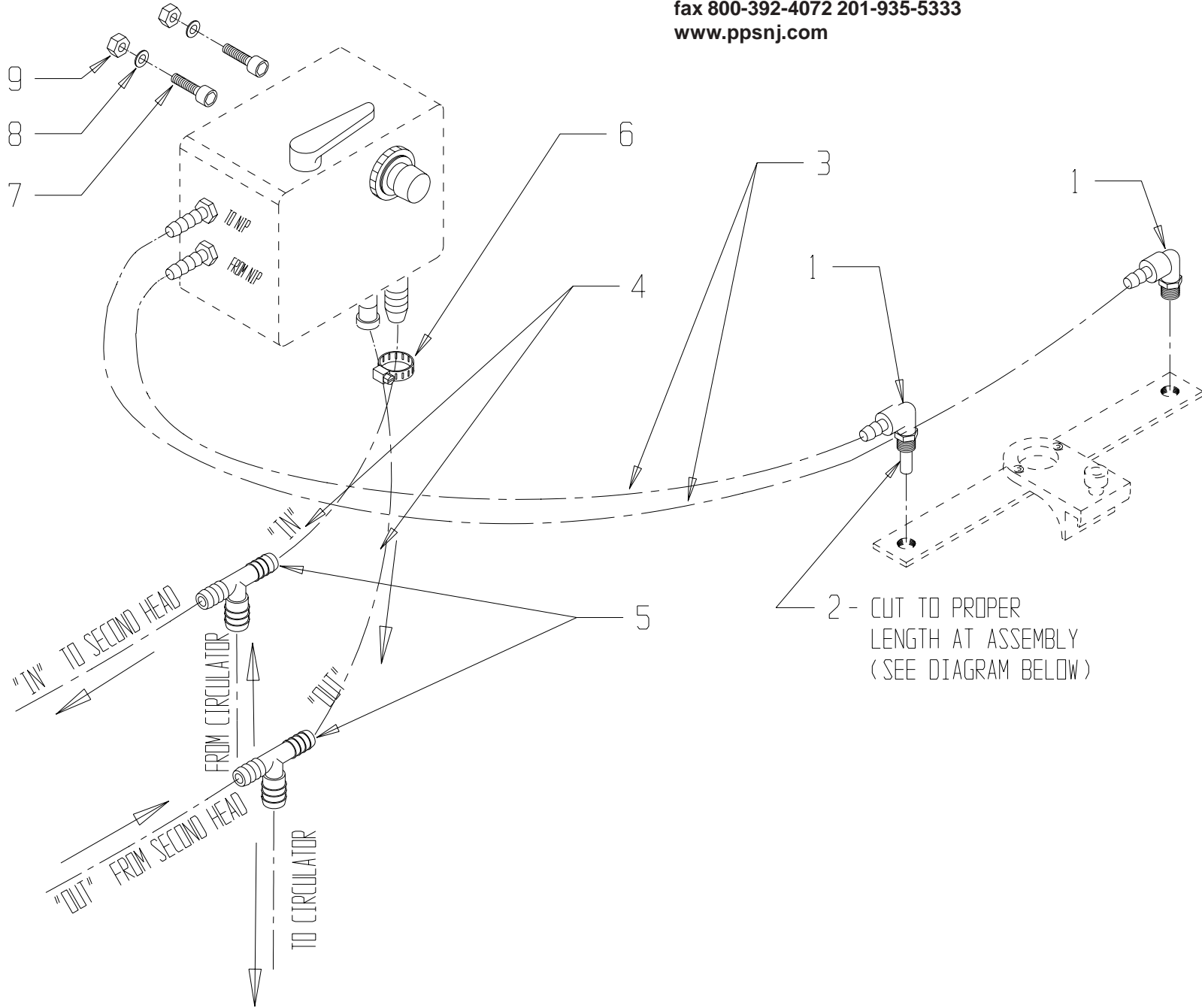
**PRINTERS PARTS**

800-543-1117 201-935-9595  
fax 800-392-4072 201-935-5333  
www.ppsnj.com



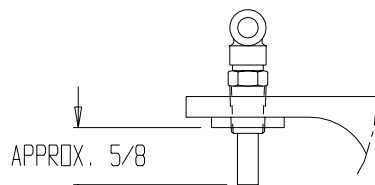
17	091956	WASHER, FLAT	6
16	094618	PANEL NUT	1
15	095962	FITTING, 1/8 NPT x 1/4 BARB	2
14	094612	PLATE, MOUNTING	1
13	091907	SCREW #6-32 PAN HD. SELF-TAP	2
12	091824	SCREW #6-32 TRUSS HD.	1
11	091062	FITTING, 1/8 NPT x 3/8 BARB	1
10	095939	TIP, VACUUM	1
09	095938	BODY, VACUUM	1
08	095948	NIPPLE, CLOSE, 1/8 NPT	1
07	095949	BALL VALVE	1
06	094616	COUPLING, 1/8 NPT	1
05	094613	TEE, STREET, 1/8 NPT	1
04	094615	NIPPLE, LONG, 1/8 NPT	1
03	094614	ELBOW, STREET, 1/8 NPT	2
02	094617	NEEDLE VALVE	1
01	094611	ENCLOSURE	1
ITEM	PART NO.	DESCRIPTION	QTY.

**PRINTERS PARTS**  
 800-543-1117 201-935-9595  
 fax 800-392-4072 201-935-5333  
 www.ppsnj.com



NOTE: GIVEN QUANTITY IS PER (1) PRINTING HEAD

9	091752	M5 HEX NUT	2
8	091740	M5 SPLIT LOCK WASHER	2
7	091891	M5x16mm SOCKET HEAD CAP SCREW	2
6	091911	CLAMP, HOSE, WORM S.S.	8
5	091077	BARB TEE, 1/2 X 3/8 X 3/8	1
4	091081	PVC FLEX. TUBING 3/8 I.D. X 5/8 O.D.	1
3	091084	TUBING, 1/4 IDx3/8 OD RUBBER W/SLEEVE	1
2	091078	1/4 O.D. TUBING, 2" LG	1
1	095963	ELBOW FITTING, 1/8 NPT x 1/4 BARB	2
ITEM	PART NO.	DESCRIPTION	QTY.



CUT TUBING ITEM #2 TO LENGTH  
 AT INSTALLATION.