

MULTILITH^{A16} 1250^{VA}
(MONA)

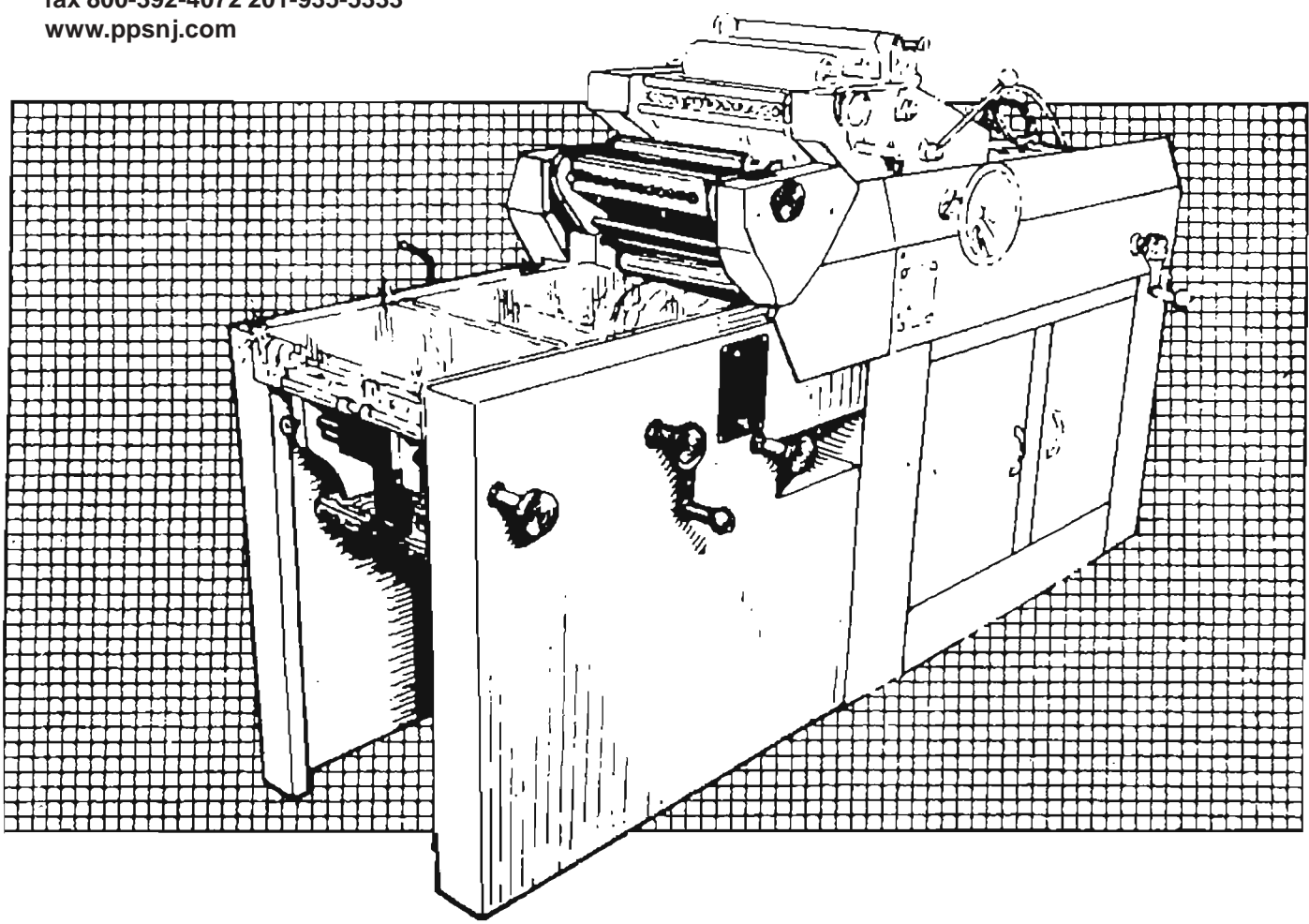
PARTS MANUAL

A11 (1350)^A
A13 (1850)^A

OTHER MODELS

MONA

PRINTERS PARTS
800-543-1117 201-935-9595
fax 800-392-4072 201-935-5333
www.ppsnj.com



MODEL 1250 NPD

PRINTERS PARTS
800-543-1117 201-935-9595
fax 800-392-4072 201-935-5333
www.ppsnj.com

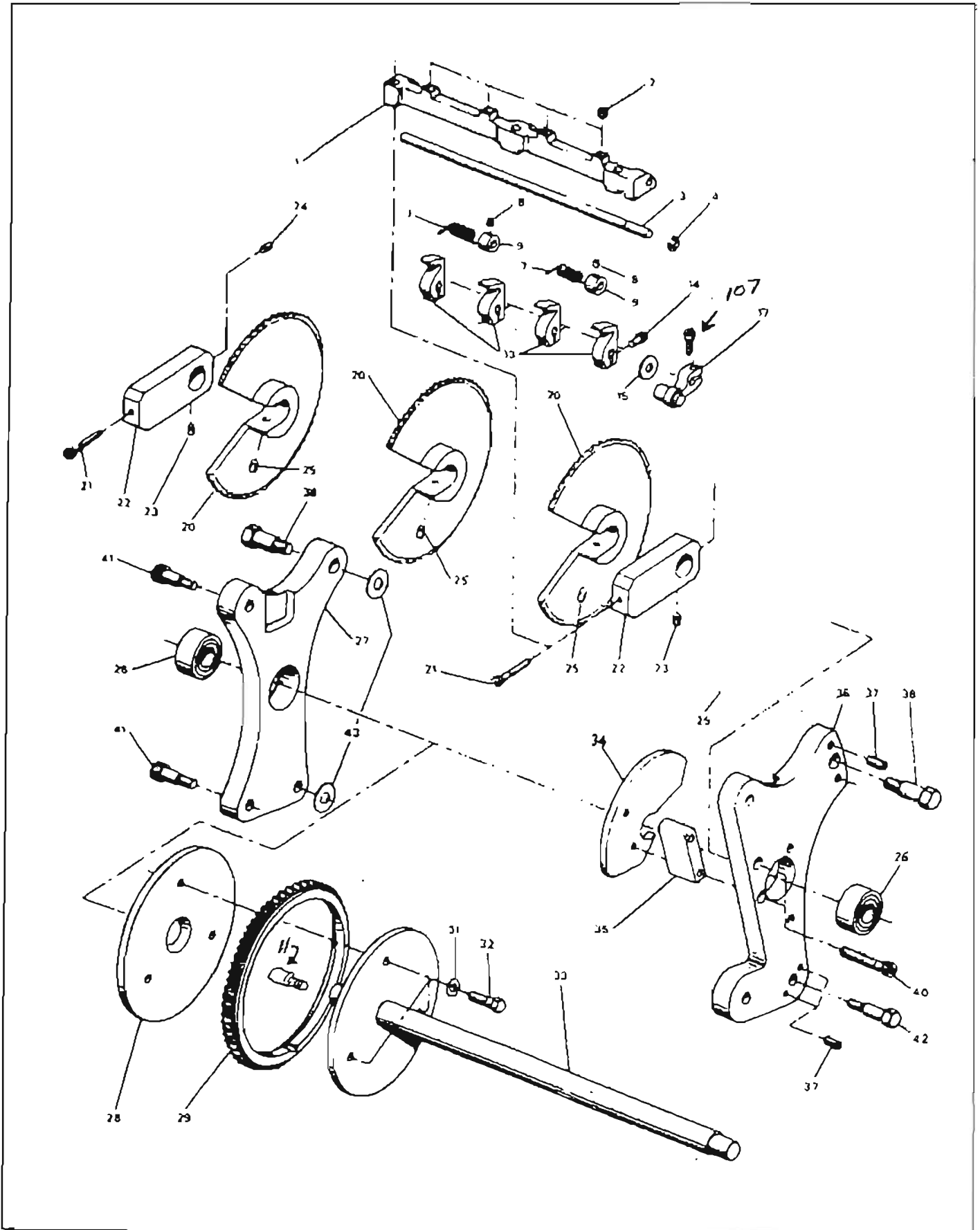
PRINTED IN CANADA
P/N: F16-42-6

BARRE DE TRANSFERT & FAUX CYLINDRE
TRANSFER BAR & FALSE CYLINDER

FIGURE

F1

MONA



ITEM	PART NUMBER	FIGURE 1		BARRE DE TRANSFERT & FAUX CYLINDRE	
		DESCRIPTION	DESCRIPTION	DESCRIPTION	QTY
	F01-01-A1	= F01-01-12 + F01-09-0-4x + F01-07-0-2x + F01-85-0 3x + F01-13-0-4x + F01-17-0 + C8-32*3			
		* F01-03-0			
01	F01-01-A1	TRANSFER BAR ASSY	BARRE DE TRANSFERT ASS.		1
01 - 1x	F01-01-12	TRANSFER BAR WITH ITEM 2	BARRE DE TRANSFERT AVEC ITEM 2		1
02	F01-02-0	RUBBER STOP	CAOUTCHOUC D'ARRET		4
03 - 1x	F01-03-0	TRANSFER BAR SHAFT	AXE		1
04 - 1x	C8-32*1/2	SCREW	VIS		4
07 - 2x	F01-07-0	SPRING	RESSORT		2
08	S8-32*1/8	SCREW	VIS		4
09 - 1x	F01-09-0	COLLAR	COLLET		4
10	Z1/4*5/16*3/8	BUSHING	COUSSINET		3
11	F01-11-0-B0	DRIVER	BUTOIR		1
12	W1/4	WASHER	RONDELLE		2
13 - 4x	F01-13-0-B0	GRIPPER WITH 14	PINCE AVEC 14		4
14 - 4x	C8-32*1/2	SCREW	VIS		5
17 - 1x	F01-17-0	ROLLER ARM ASSEMBLY WITH 14	BRAS ASS. AVEC 14		1
18	R1/4*5/8	BEARING	ROULEMENT		1
20	F01-20-0-B0	TOOTHED DISC WITH 25	DISQUE AVEC 25		3
21	C8-32*1	SCREW	VIS		2
22	F01-22-0	BAR BLOCK	BLOC DE BARRE		2
23	C1/4-20*3/8	SCREW	VIS		2
24	C1/4-20*1/2	SCREW	VIS		2
25	SD1/4-20*1	SCREW	VIS		3
26	R15MM*35MM	BEARING	ROULEMENT		2
27	F01-27-0-B0	FRAME NOP	BATI NOP		1
28	F01-28-0	DISK	DISQUE		1
29	F01-29-0	RING GEAR	ENGRENAGE		1
31	W1/4	WASHER	RONDELLE		3
32	B1/4-28*5/8	SCREW	VIS		3
33	F01-33-0	DISK AND SHAFT	DISQUE ET ARBRE		1
34	F01-34-0-B0	CAM	CAME		1
35	F01-35-0	CAM SUPPORT	SUPPORT DE CAME		1
36	F01-36-0-B0	FRAME OP	BATI OP		1
37	S1/4-20*3/4	SCREW	VIS		4
38	F01-38-0	SCREW	VIS		2
40	C1/4-20*2	SCREW	VIS		2
41	C83/8*3/4	SCREW	VIS		4
42	F01-42-0	SCREW	VIS		2
43	W3/8	WASHER	RONDELLE		3
93	W1/4	WASHER	RONDELLE		8
106	C1/4-20*5/8	SCREW	VIS		2
107	C8-32 x 5/8	SCREW	VIS		1

~~01-1x~~
 F01-01-A1 = 01-1x
 09-1x
 07-2x
 * F01-85-0 - 3x
 13-4x
 14-4x
 03-1x

FIGURE 2

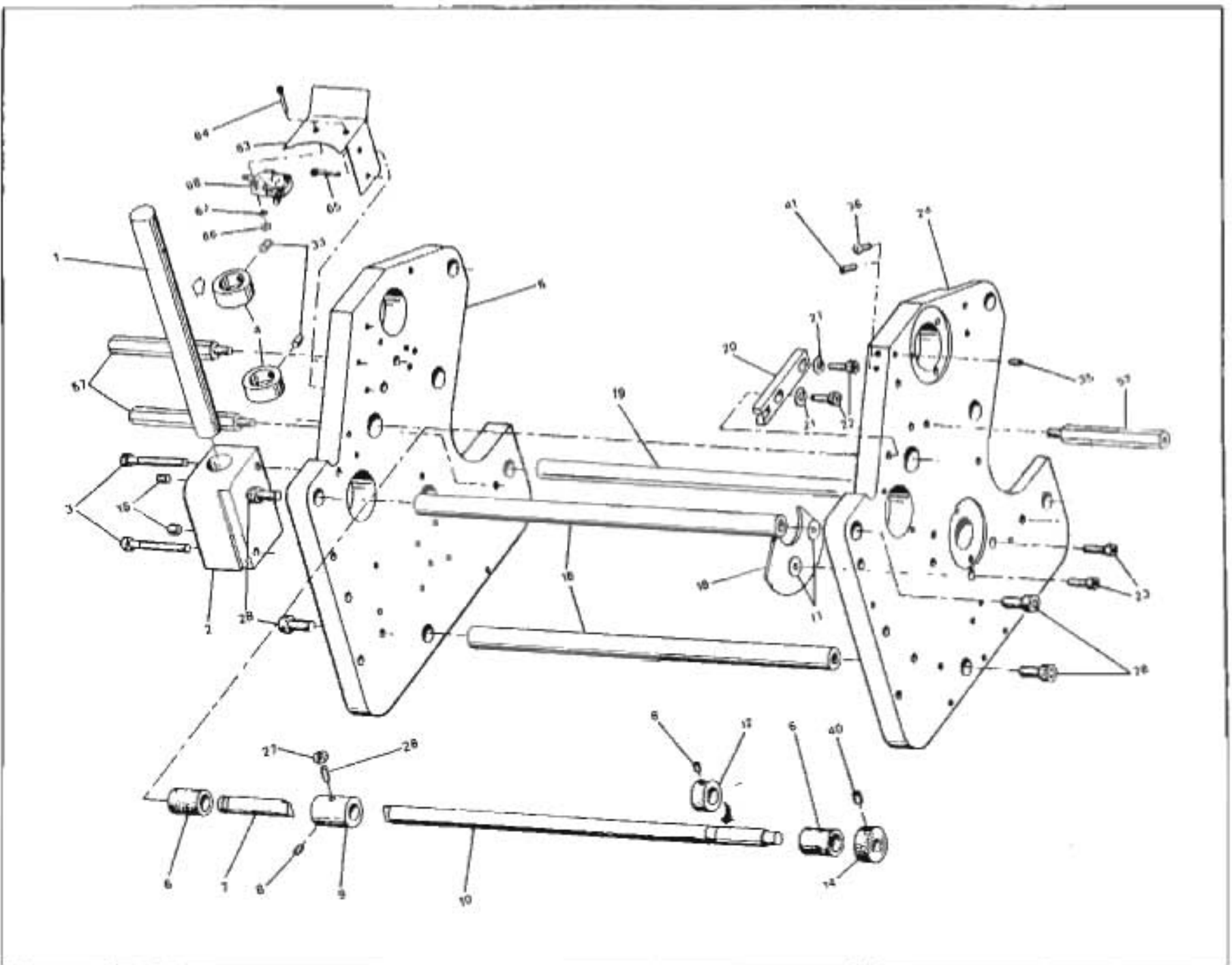


FIGURE 2

BATI DU NUMEROTEUR
NUMBERING UNIT FRAME

ITEM	PART NUMBER	DESCRIPTION	DESCRIPTION	QTY
01	F02-01-0	INKING SHAFT	AXE	1
02	F02-02-0	INKING BLOCK	BLOC	1
03	C1/4-20*2 1/2	SCREW	VIS	2
04	F02-04-0	COLLAR	COLLET	2
05	F02-05-0-B0	FRAME NOP	BATI NOP	1
06	Z1/2*3/4*1	BUSHING	COUSSINET	2
07	F02-07-0	SHORT CAM SHAFT	AXE	1
08	S10-32*3/16	SCREW	VIS	2
09	F02-09-0	COLLAR	COLLET	1
10	F02-10-0	CAM SHAFT	ARBRE	1
11	F02-11-0-B0	WASHER	RONDELLE	2
12	F02-12-0	COLLAR	COLLET	1
14	F02-14-0	KNOB	MANETTE	1
15	S1/4-28*5/8	SCREW	VIS	2
16	F02-16-0	SPACE BAR	BARRE D'ESPACEMENT	2
18	F02-18-0-B0	CAM	CAME	1
19	F02-19-0	TIE ROD	TIGE	2
20	F02-20-0	INKING BAR	BARRE	1
21	WL1/4	LOCK WASHER	RONDELLE DE BLOCAGE	2
22	C1/4-20*5/8	SCREW	VIS	2
23	C1/4-20*3/4	SCREW	VIS	2
24	F02-24-0-B0	FRAME OP	BATI OP	1
26	S10-32*3/8	SCREW	VIS	1
27	N10-32	NUT	ECROU	1
28	C5/16-18*1	SCREW	VIS	4
33	S1/4-20*1/4	SCREW	VIS	2
40	S1/4-28*1/4	SCREW	VIS	1
41	S10-32*1/2	SCREW	VIS	1
57	F02-57-0	HEXAGONAL STUD	VIS A EPAULEMENT	3

FIGURE 3

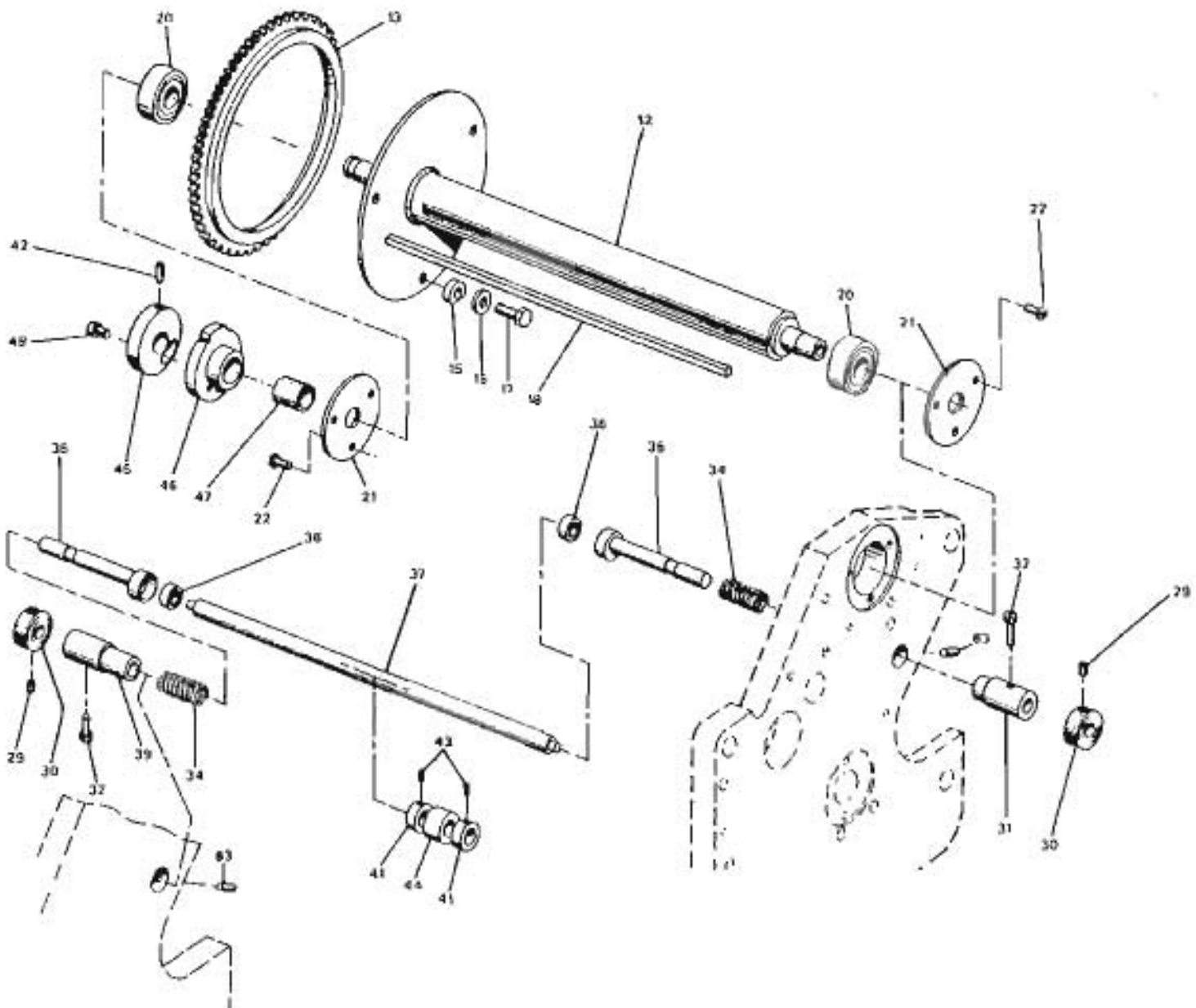


FIGURE 3

NUMEROTEUR - ARBRES & CAMES
NUMBERING UNIT - CAMS & SHAFTS

ITEM	PART NUMBER	DESCRIPTION	DESCRIPTION	QTY
12	F03-12-0	SHAFT	AXE	1
13	F03-13-0	GEAR	ENGRENAGE	1
15	F03-15-0	SPACER	ESPACEUR	3
16	F03-16-0	SPACER	ESPACEUR	3
17	B1/4-28*5/8	SCREW	VIS	3
18	F03-18-0	KEY	CLE	1
20	R15MM*35MM	BEARING	ROULEMENT	2
21	F03-21-0	PLASTIC DISK	DISQUE	2
22	M8-32*3/8	SCREW	VIS	6
23	S10-32*5/8	SCREW	VIS	1
24	F03-24-1	CAM	CAME	1
29	S1/4-28*1/4	SCREW	VIS	2
30	F02-14-0	KNOB	MANETTE	2
31	F03-31-0	SLEEVE	MANCHON	1
32	C10-32*3/8	SCREW	VIS	2
34	F03-34-0	SPRING	RESSORT	2
35	F03-35-0	ECCENTRIC SHAFT WITH ITEM 36	ARBRE EXCENTRIQUE AVEC ITEM 36	2
36	R1/4*5/8	BEARING	ROULEMENT	2
37	F03-37-0	SHAFT	AXE	1
39	F03-39-0	SLEEVE	MANCHON	1
41	F03-41-0	COLLAR	COLLET	6
42	S1/4-20*5/8	SCREW	VIS	1
43	SF8-32*1/8	SCREW	VIS	6
44	F03-44-0	PERFORATION WHEEL	ROUE DE PERFORATION	3
45	F03-45-0	CAM	CAME	1
46	F03-46-0	DOUBLE CAM WITH 48	CAME AVEC 48	1
47	Z9/16*11/16*3/4	BUSHING	COUSSINET	1
48	C1/4-28*3/8	SCREW	VIS	1
50	F03-50-0-B0	BUSHING	COUSSINET	1
51	F03-51-0-B0	NYLON WHEEL	ROUE DE NYLON	2
52	F03-52-0	O RING	ANNEAU	2
63	S10-32*3/8	SCREW	VIS	2

NUMÉROTEUR - CYLINDRE & ROULEAUX
NUMBERING UNIT - CYLINDER & ROLLERS

FIGURE 4

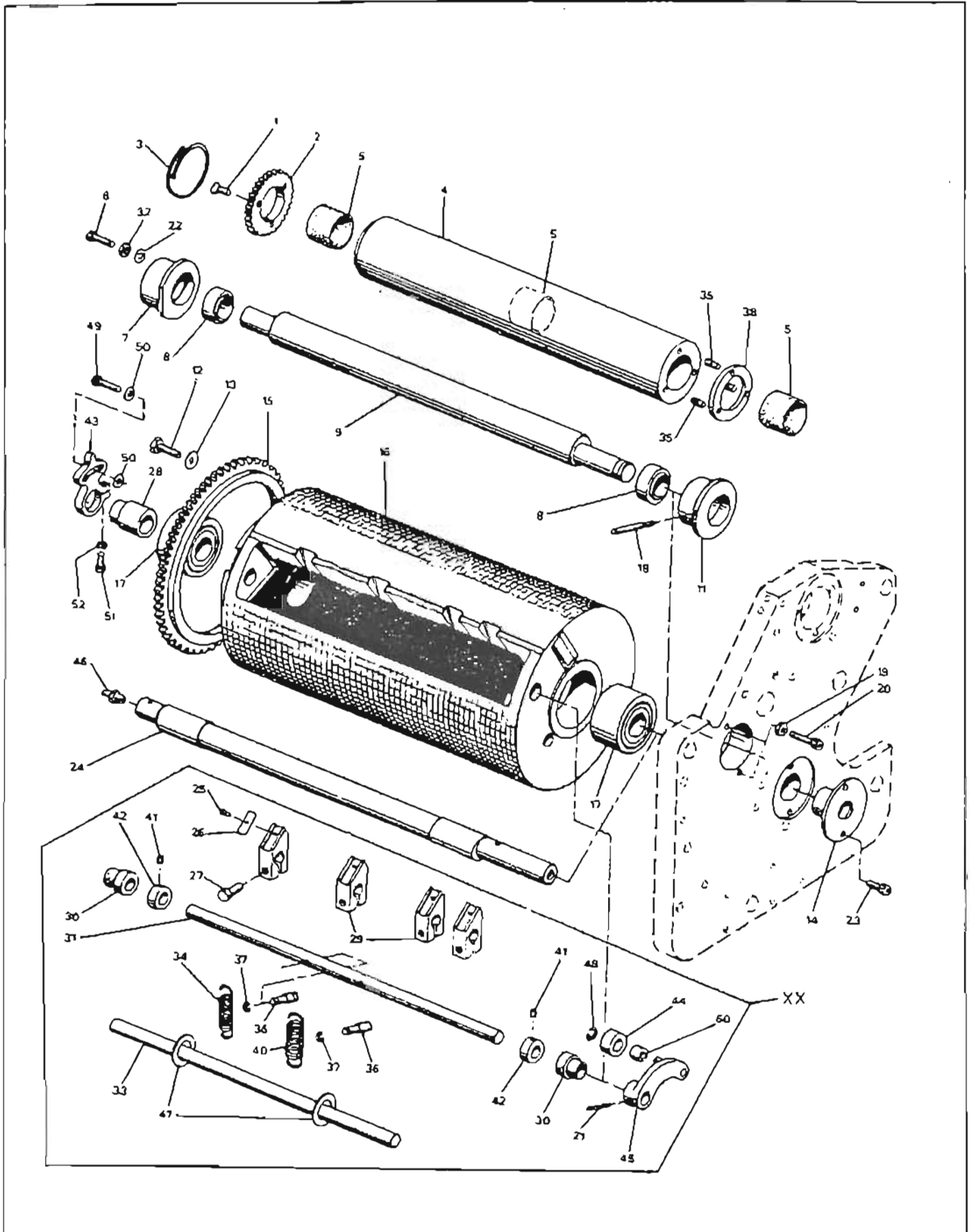


FIGURE 4

NUMEROTEUR - CYLINDRE & ROULEAUX
NUMBERING UNIT - CYLINDER & ROLLERS

ITEM	PART NUMBER	DESCRIPTION	DESCRIPTION	QTY
01	CP8-32*5/8	SCREW	VIS	3
02	F04-02-0	GEAR	ENGRENAGE	1
03	F04-03-0-B0	SPRING	RESSORT	1
04	F04-04-A16	PERFORATION ROLLER (F04-01-0-B0)	ROULEAU DE PERFORATION	1
		ITEM 04,05,35,38 ASSY	ITEM 04,05,35,38 ASS.	
05	Z1*1 1/8*1 1/2	BUSHING	COUSSINET	3
06	C8-32*5/8	SCREW	VIS	1
07	F04-07-0	ECCENTRIC BEARING HOLDER	MANCHON EXCENTRIQUE	1
		ITEM 08 INCLUDED	ITEM 08 INCLUS	
08	RS5/8*1 3/16	BEARING	ROULEMENT	2
09	F04-09-0	ECCENTRIC SHAFT	ARBRE EXCENTRIQUE	1
10	F04-10-0	PIN	GOUPILLE	1
11	F04-11-0	ECCENTRIC BEARING HOLDER	MANCHON EXCENTRIQUE	1
12	B1/4-20*1/2	SCREW	VIS	3
13	W1/4	WASHER	RONDELLE	3
14	F04-14-0	SLEEVE	MANCHON	1
15	F04-15-0	GEAR	ENGRENAGE	1
*16	F04-16-A20	ITEM 16,17,XX	ITEM 16,17,XX	1
16	F04-16-A10	ITEM 16,17,30,33,47 ASSY	ITEM 16,17,30,33,47 ASS.	1
17	R20MM*47MM	BEARING	ROULEMENT	2
18	F04-18-0	PIN	GOUPILLE	1
19	N10-32	NUT	ECROU	2
20	C10-32*1	SCREW	VIS	2
21	PS1/8*3/4	SPRING PIN	GOUPILLE A RESSORT	1
22	W3/16	WASHER	RONDELLE	1
23	C8-32*5/8	SCREW	VIS	2
24	F04-24-0	CYLINDER SHAFT	ARBRE	1
25	F04-25-0	SCREW	VIS	5
26	F04-26-0	GRIPPER BLADE	PINCE	5
27	B1/4-28*5/8	SCREW	VIS	5
28	F04-28-0	SLEEVE	MANCHON	1
29	F04-29-0	GRIPPER HOLDER	SUPPORT DE PINCE	5
30	F04-30-0	BUSHING	COUSSINET	2
31	F04-31-A10 -	ITEM 31,45,21,48,44,60 ASSY	ITEM 31,45,21,48,44,60 ASS.	1
32	N8-32	NUT	ECROU	1
33	F04-33-0	SPACER SHAFT	AXE D'ESPACEMENT	1
34	F04-34-0	SPRING	RESSORT	1
35	PS1/8*1/2	SPRING PIN	GOUPILLE A RESSORT	3
36	F04-36-0	PIN	GOUPILLE	2
37	C CLIP 3/16	RETAINING RING	RONDELLE EN C	2
38	F04-38-0	WASHER	RONDELLE	1
39	C CLIP 7/16	RETAINING RING	RONDELLE EN C	2
40	F04-40-0	SPRING	RESSORT	1
41	S10-32*3/16	SCREW	VIS	2
42	F04-42-0	COLLAR	COLLET	2
43	F04-43-0	AIGUILLE	NEEDLE	1
44	F04-44-0	BEARING ITEM 60 INCLUDED	ROULEMENT ITEM 60 INCLUS	1
45	ORDER ITEM 31	LEVER ARM	BRAS DE LEVIER	1
46	F04-46-0	LUB FITTING	GRAISSEUR	1
47	F04-47-0	WASHER	RONDELLE	2
48	C CLIP 5/16	RETAINING RING	RONDELLE EN C	1
49	C8-32*3/4	SCREW	VIS	1
50	W3/16	WASHER	RONDELLE	1
51	C8-32*1/2	SCREW	VIS	1
52	WL#8	LOCK WASHER	RONDELLE DE BLOCAGE	1
60	F04-60-0-B0	BUSHING	COUSSINET	1

F04-31-0-B0 + F04-44-0 + #48 clip 5/16

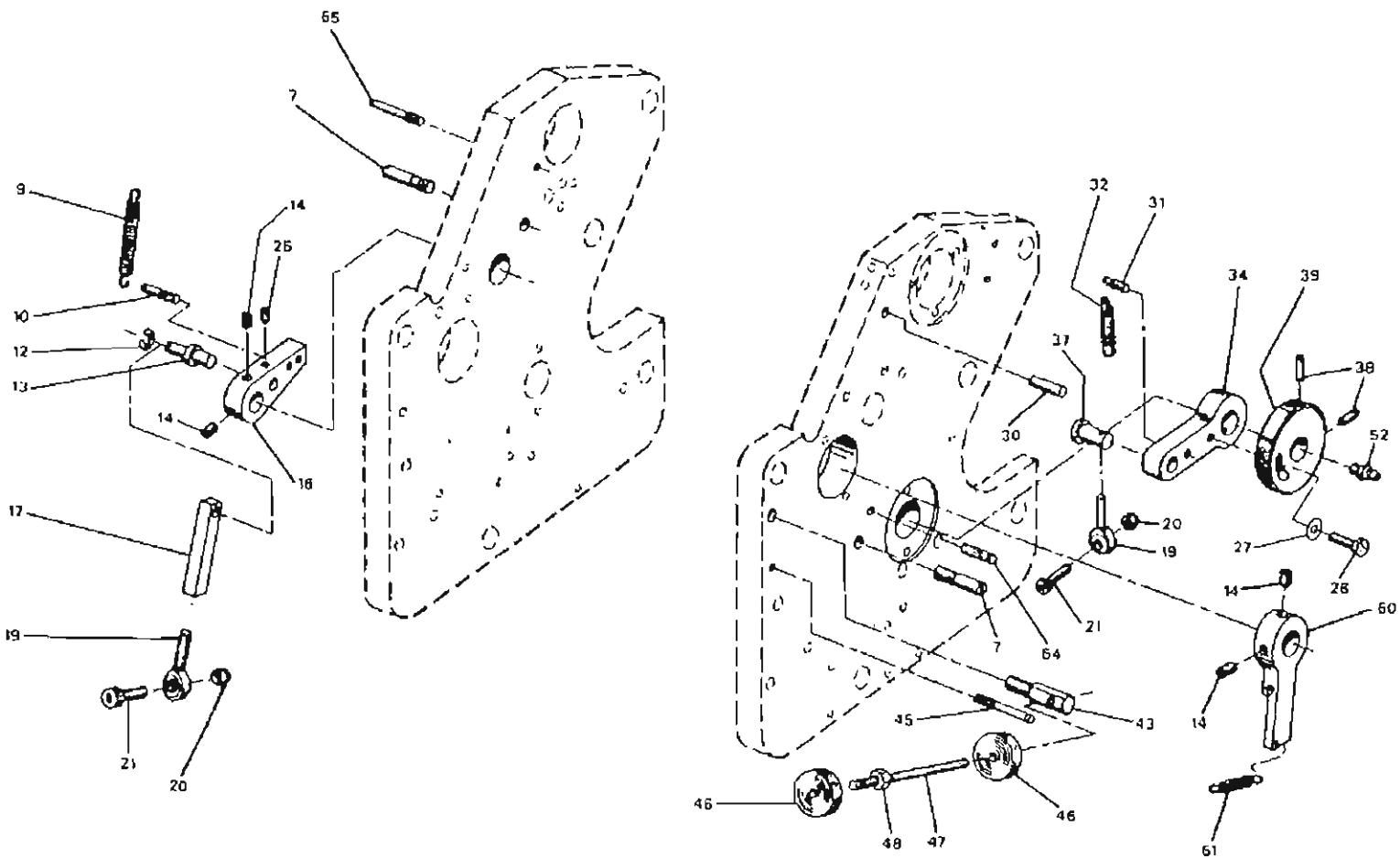


FIGURE 5

 NUMEROTEUR - MECANISMES OP & NOP
 NUMBERING UNIT - OP & NOP MECHANISMS

ITEM	PART NUMBER	DESCRIPTION	DESCRIPTION	QTY
07	F05-07-0	PIN	GOUPILLE	2
09	F05-09-0	SPRING	RESSORT	1
10	PG3/16*3/4	PIN	GOUPILLE	1
12	C CLIP 1/4	RETAINING RING	RONDELLE EN C	1
13	F05-13-0	FLANGED PIN	GOUPILLE	1
14	S1/4-20*5/16	SCREW	VIS	4
16	F05-16-0	LEVER WITH 10	LEVIER AVEC 10	1
17	F05-17-0	ARM	BRAS	1
19	F05-19-0	EYE SCREW	VIS	2
20	NN10-32	NYLON LOCK NUT	ECROU	2
21	C10-32*7/8	SCREW	VIS	2
25	S10-32*3/16	SCREW	VIS	1
26	B1/4-20*3/4	SCREW	VIS	1
27	W1/4	WASHER	RONDELLE	1
30	PD1/4*1 1/4	DOWEL PIN	GOUPILLE	1
31	PG3/16*3/4	PIN	GOUPILLE	1
32	F05-32-0	SPRING	RESSORT	1
34	F05-34-1	ARM WITH 31	BRAS AVEC 31	1
37	F05-37-0	FLANGED PIN	GOUPILLE	1
38	S1/4-20*3/4	SCREW	VIS	2
39	F05-39-0	KNOB	MANETTE	1
43	F05-43-0	ADJUSTMENT PIVOT	PIVOT D'AJUSTEMENT	1
45	PG3/16*1 1/2	PIN	GOUPILLE	1
46	F05-46-0	KNOB	MANETTE	2
47	F05-47-0	THREADED ROD	TIGE	1
48	N1/4-28	NUT	ECROU	1
50	F05-50-0	LEVER	LEVIER	1
51	F05-51-0	SPRING	RESSORT	1
52	F04-46-0	LUB FITTING	GRAISSEUR	1
54	PG3/16*5/8	PIN	GOUPILLE	1
55	PG3/16*1 3/4	GROOVE PIN	GOUPILLE	1

UNITÉ D'ENCRAGE - ROULEAUX, BÂTI & MÉCANISME GAUCHE
INK UNIT - ROLLERS, FRAME & L.H. MECHANISM

FIGURE
F 6

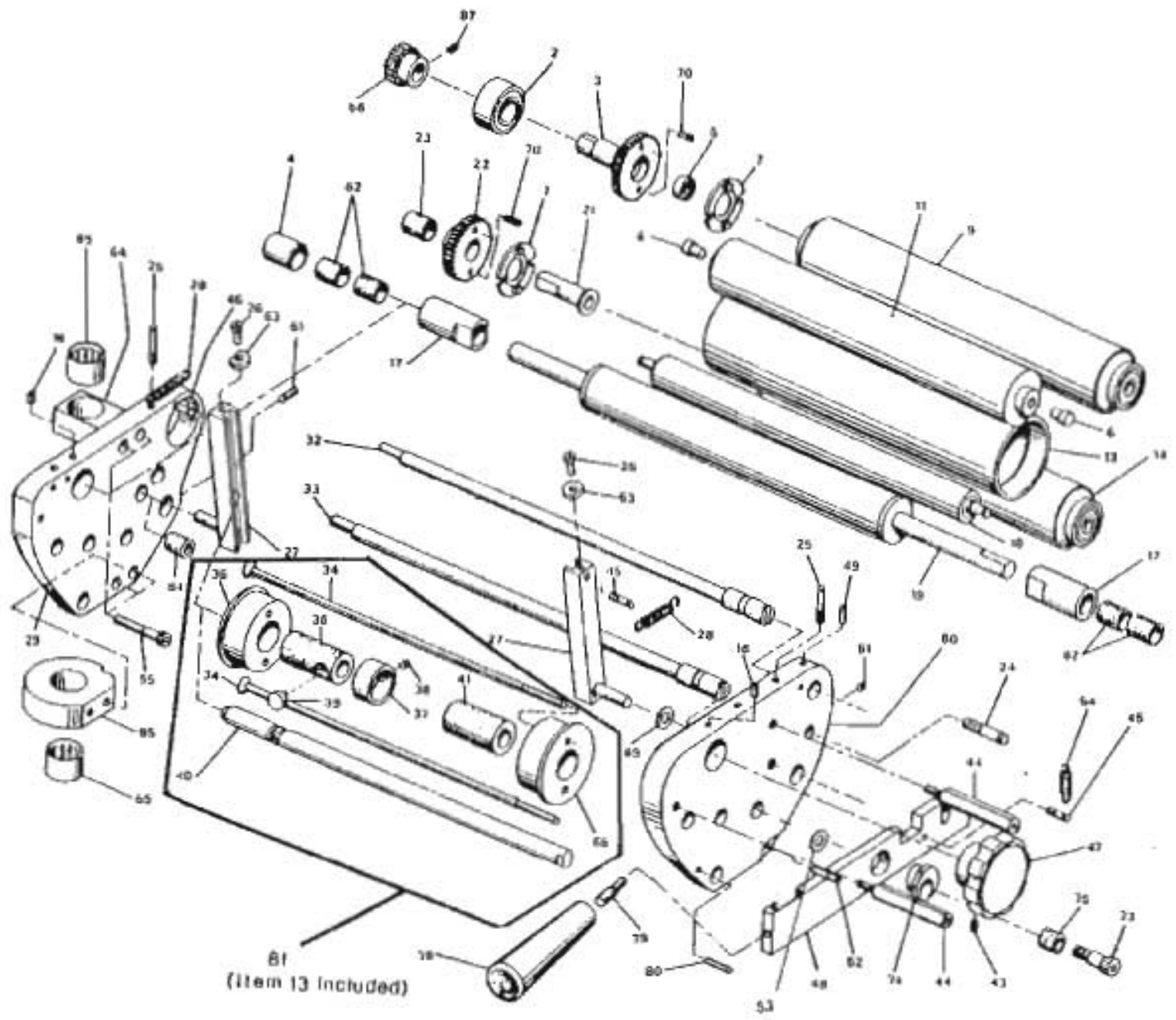


FIGURE 6

ENCRIER - ROULEAUX, BATI & MECANISME OP
INK UNIT - ROLLERS, FRAME & OP MECHANIS

ITEM	PART NUMBER	DESCRIPTION	DESCRIPTION	QTY
02	R15MM*35MM	BEARING	ROULEMENT	1
03	F06-03-A10	ITEM 03,05,70 ASSY	ITEM 03,05,70 ASS.	1
04	F06-04-0	BUSHING	COUSSINET	1
05	R1/4*5/8	BEARING	ROULEMENT	1
06	F06-06-0	PIN	GOUPILLE	2
07	F06-07-0	DRIVER	BUTOIR	2
09	F06-09-0	FORM ROLLER LARGE DIAMETER	ROULEAU GUIDE GRAND DIAMETRE	1
11	F06-11-0	ROLLER	ROULEAU	1
13	F06-13-0	TUBE ONLY SEE 81 FOR ASSY	TUBE, VOIR 81 POUS ASS.	1
14	F06-14-0	FORM ROLLER SMALL DIAMETER	ROULEAU GUIDE PETIT DIAMETRE	1
16	S10-32*5/16	SCREW	VIS	2
17	F06-17-0	BUSHING ITEM 62 INCLUDED	COUSSINET AVEC ITEM 62	2
18	F06-18-0	DUCTOR ROLLER	ROULEAU PRENEUR	1
*19	F06-19-A10	ITEM 19,17,04,62 ASSY	ITEM 19,17,04,62 ASS.	1
19	F06-19-0	FOUNTAIN ROLLER	ROULEAU DE FONTAINE	1
21	F06-21-0	PIN	GOUPILLE	1
*22	F06-22-A10	ITEM 22,23,70 ASSY	ITEM 22,23,70 ASS.	1
22	F06-22-0	GEAR	ENGRENAGE	1
23	Z1/2*11/16*5/8	BUSHING	COUSSINET	1
24	PG5/16*2-1/4	PIN	GOUPILLE	1
25	PG3/16*7/8	PIN	GOUPILLE	2
26	C8-32*3/8	SCREW	VIS	2
27	F06-27-0	GUIDE BLOCK WITH 45	BLOC AVEC 45	2
28	F06-28-0	SPRING	RESSORT	2
29	F06-29-0-B0	FRAME NOP	BATI NOP	1
31	F06-31-0	BUSHING	COUSSINET	1
32	F06-32-0	ECCENTRIC SHAFT	ARBRE EXCENTRIQUE	1
33	F06-33-0	ECCENTRIC SHAFT	ARBRE EXCENTRIQUE	1
34	F06-34-0	SCREW	VIS	2
35	F06-35-0	END BELL (WITHOUT THREADS)	BRIDE DE ROULEAU SANS FILETS	1
36	F06-36-0	BUSHING	COUSSINET	1
37	F06-37-0	COLLAR	COLLET	1
38	S8-32*1/8	SCREW	VIS	1
39	F06-39-0	DRIVER DOG	GRIFFE D'ENTRAINEMENT	1
40	F06-40-0	SHAFT	AXE	1
41	F06-41-0	BUSHING	COUSSINET	1
43	S10-32*3/8	SCREW	VIS	1
44	F06-44-0	HEXAGONAL STUD	VIS A EPAULEMENT	2
45	PG3/16*3/4	PIN	GOUPILLE	2
47	F06-47-0	KNOB	MANETTE	1
48	F06-48-1	LEVER	LEVIER	1
49	S10-32*1/2	SCREW	VIS	1
50	F06-50-0-B0	FRAME OP	BATI OP	1
51	S10-32*3/8	SCREW	VIS	1
52	PS3/16*1	SPRING PIN	GOUPILLE A RESSORT	1
53	W5/16	WASHER	RONDELLE	1
54	F04-40-0	SPRING	RESSORT	1
55	C1/4-20*3/4	SCREW	VIS	4
56	F06-56-0	GEAR	ENGRENAGE	1
61	S10-32*1/2	SCREW	VIS	1
62	Z1/2*5/8*1/2	BUSHING	COUSSINET	4
63	F11-29-0	SPACER	ESPACEUR	2
64	F06-64-0	BLOCK WITH 65	BLOC AVEC 65	1

FIGURE 6

ENCRIER - ROULEAUX, BATI & MECANISME OP
INK UNIT - ROLLERS, FRAME & OP MECHANIS

ITEM	PART NUMBER	DESCRIPTION	DESCRIPTION	QTY
65	RN3/4*1	NEEDEL BEARING	ROULEMENT	2
66	F06-66-0	END BELL WITH THREADS	BRIDE DE ROULEAU AVEC FILETS	1
70	PS3/16*1/2	SPRING PIN	GOUPILLE A RESSORT	4
73	CS3/4*1/2	SCREW	VIS	1
74	P40	EXCENTRIC COLLAR	COLLET EXCENTRIQUE	1
75	Z3/8*1/2*1/2	BUSHING	COUSSINET	1
78	F06-78-0	KNOB	MANETTE	1
79	F06-79-0	PIN	GOUPILLE	1
80	PS3/16*1-1/4	SPRING PIN	GOUPILLE A RESSORT	1
81	F06-81-0	OSCILLATOR ROLLER ASSY	ROULEAU OSCILLATEUR	1
85	F06-85-0	CAM WITH 65	CAME AVEC 65	1
87	S10-32*3/16	SCREW	VIS	1

UNITÉ D'ENCRAGE - TIGES D'ASSEMBLAGE, ENCRIER & MÉCANISME DROIT
INK UNIT - TIE RODS, INK FOUNTAIN AND R.H. MECHANISM

FIGURE 7

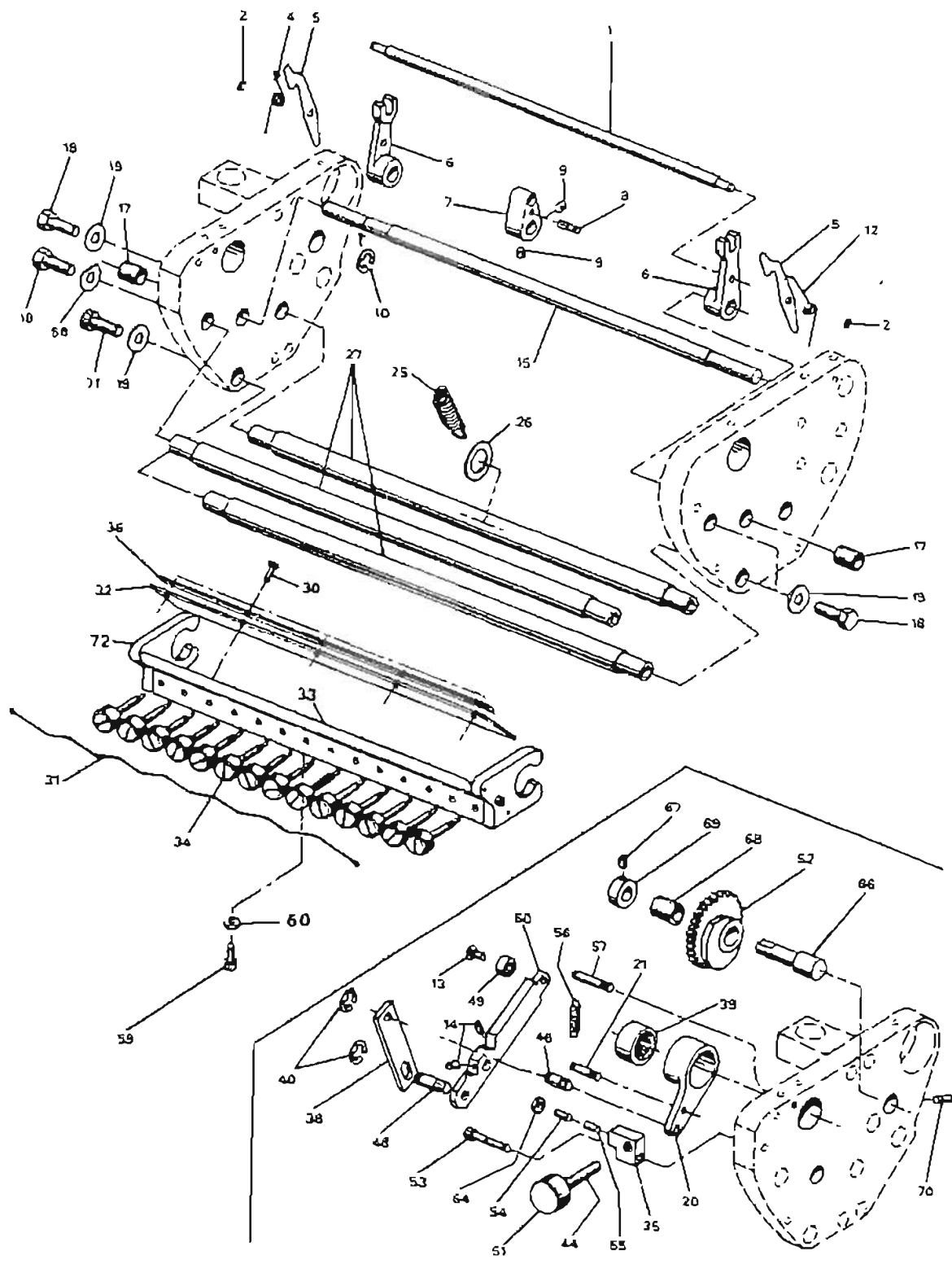


FIGURE 7 ENCRIER - TIGES D'ASSEMBLAGE, ENCRIER & MECANISME NOP
 INK UNIT - TIE RODS, INK FOUNTAIN & NOP MECHANISM

ITEM	PART NUMBER	DESCRIPTION	DESCRIPTION	QTY
01	F07-01-0	SHAFT	AXE	1
02	C CLIP 7/32	RETAINING RING	RONDELLE EN C	2
04	F07-04-0	SPRING	RESSORT	1
05	F07-05-0	LATCH	CLIQUET	2
06	F07-06-0	NYLON ARM	BRAS	2
07	F07-07-0	DRIVER WITH 8	BUTOIR AVEC 8	1
08	PG3/16*1 3/8	PIN	GOUPILLE	1
09	S1/4-20*1/4	SCREW	VIS	2
10	C CLIP 3/8	RETAINING RING	RONDELLE EN C	1
12	F07-12-0	SPRING	RESSORT	1
13	M10-32*3/8	SCREW	VIS	1
14	S10-32*3/16	SCREW	VIS	2
15	F07-15-0	SHAFT	AXE	1
17	Z3/8*1/2*3/4	BUSHING	COUSSINET	2
18	B5/16-18*5/8	SCREW	VIS	6
19	W5/16	WASHER	RONDELLE	5
20	F07-20-0	COLLAR WITH ITEM 21,39	COLLET AVEC ITEM 21,39	1
21	PG3/16*5/8	PIN	GOUPILLE	1
25	F07-25-0	SPRING	RESSORT	1
26	F04-47-0	WASHER	RONDELLE	1
27	F02-19-0	TIE ROD	TIGE	3
30	CF8-32*3/8	SCREW	VIS	5
31	F07-31-0	TENSION SPRING	RESSORT DE TENSION	1
32	F07-32-0-B0	MACHINED BLADE	BLADE USINEE	1
*33	F07-33-A10	ITEM 30-34,36,59,60,72 ASSY	ITEM 30-34,36,59,60,72 ASS.	1
33	F07-33-0	INK FOUNTAIN WITH ITEM 72	ENCRIER AVEC ITEM 72	1
34	F07-34-0	FOUNTAIN SCREW	VIS	14
35	F07-35-0	HOLDING BLOCK	BLOC	1
36	F07-36-0	INK BAR	BARRE	1
38	F07-38-0	LINK	LIEN	1
39	RW3/4*1	NEEDLE BEARING	ROULEMENT	1
40	C CLIP 5/16	RETAINING RING	RONDELLE EN C	2
44	C1/4-28*1 3/4	SCREW	VIS	1
46	F07-46-0	PIN	GOUPILLE	2
49	R3/16*1/2	BEARING	ROULEMENT	1
50	F07-50-0	LEVER WITH ITEM 13,49,46,14	LEVIER AVEC ITEM 13,49,46,14	1
51	F07-51-0	KNOB WITH 44	MANETTE AVEC 44	1
52	F06-82-0	CAM GEAR WITH 68	ENGRENAGE AVEC 68	1
53	C10-32*1	SCREW	VIS	1
54	S8-32*1/2	SCREW	VIS	1
55	F07-55-0	NYLON ROD	MORCEAU DE NYLON	1
56	F05-32-0	SPRING	RESSORT	1
57	PG3/16*1 1/2	PIN	GOUPILLE	1
58	F07-58-0-B0	WASHER	RONDELLE	1
59	C10-32*5/8	SCREW	VIS	1
60	N10-32	NUT	ECROU	1
62	C1/4-20*3/4	SCREW	VIS	2
63	PS1/8*3/4	SPRING PIN	GOUPILLE A RESSORT	4
64	N8-32	NUT	ECROU	1
66	F06-60-0	PIN	GOUPILLE	1
67	S10-32*3/16	SCREW	VIS	1
68	Z3/8*9/16*3/4	BUSHING	COUSSINET	1
69	F06-67-0	COLLAR	COLLET	1
70	S10-32*3/8	SCREW	VIS	1

LIVRAISON À CHAINES - BÂTI, MECANISME COGNEUR
VERTICAL & CRÉMAILLÈRE
CHAIN DELIVERY, FRAME, VERTICAL JOGGER
AND RACK & GEAR

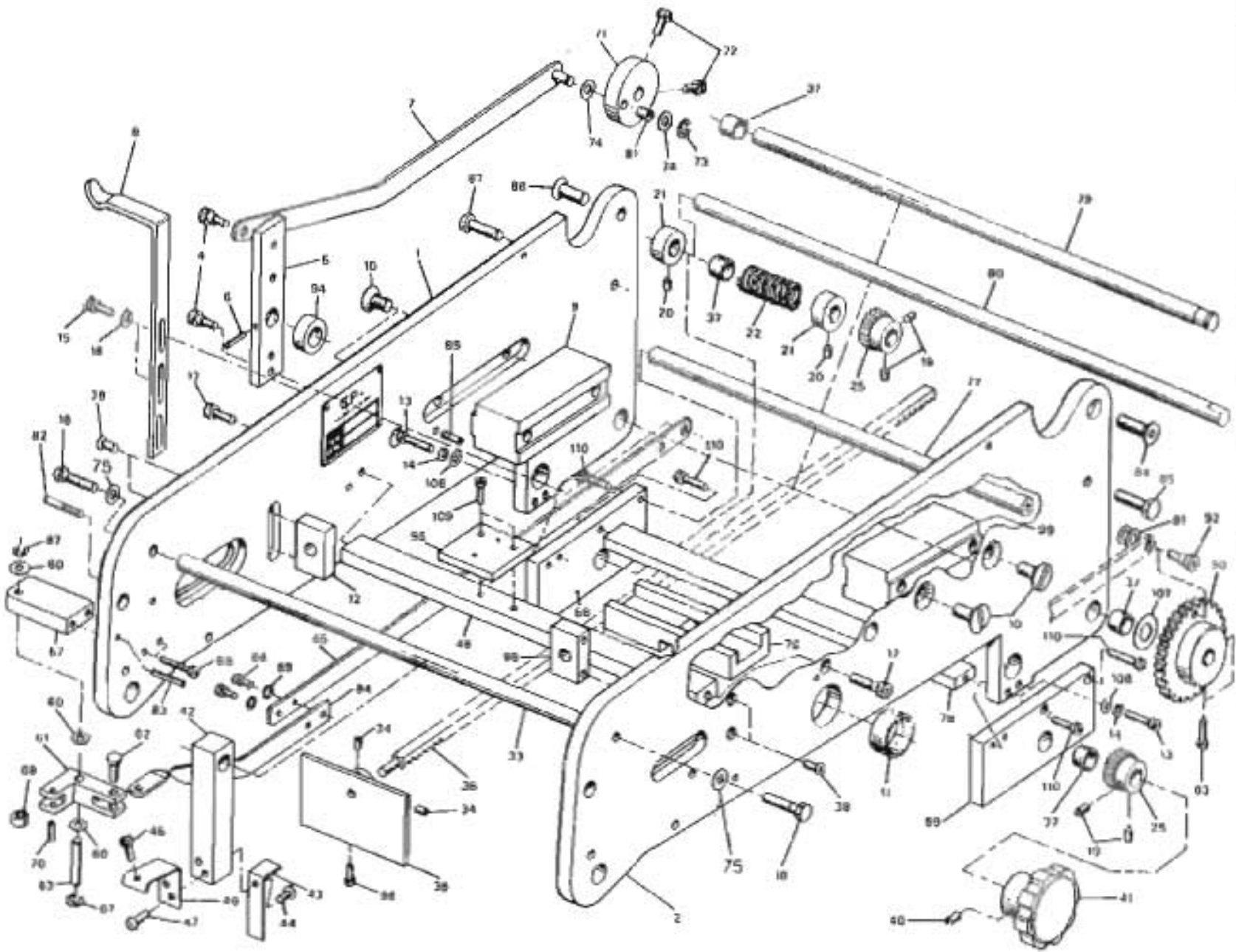


FIGURE 8

FIGURE 8

LIVRAISON A CHAÎNE & CREMAILLERE
CHAIN DELIVERY & RACK AND GEAR

ITEM	PART NUMBER	DESCRIPTION	DESCRIPTION	QTY
01	F08-01-0-B0	FRAME NOP	BATI NOP	1
02	F08-02-0-B0	FRAME OP	BATI OP	1
04	CS5/16*1/4	SCREW	VIS	2
05	F08-05-1	LINK	LIEN	1
07	F08-07-3 >	ARM	BRAS	1
08	F08-08-0	STOP BAR	BARRE D'ARRET	1
09	F08-09-0	HOLDING BLOCK	BLOC	1
10	MF3/8-16*3/4	SCREW	VIS	4
11	Z1*1 1/8*1	BUSHING	COUSSINET	1
12	F08-12-0	BLOCK	BLOC	2
13	C10-32*1	SCREW	VIS	4
14	WL #10	LOCK WASHER	RONDELLE DE BLOCAGE	4
15	B1/4-20*3/4	SCREW	VIS	2
16	WL1/4	LOCK WASHER	RONDELLE DE BLOCAGE	2
17	C1/4-20*3/4	SCREW	VIS	2
18	B1/4-20*1	SCREW	VIS	2
19	SF10-32*3/16	SCREW	VIS	4
20	S10-32*3/16	SCREW	VIS	2
21	F02-12-0	COLLAR	COLLET	2
22	F08-22-0	SPRING	RESSORT	1
25	F08-25-0-B0	GEAR	ENGRENAGE	2
33	F08-33-0	TIE ROD	TIGE	1
34	S8-32*1/8	SCREW	VIS	2
35	F08-35-0-B0	RACK GEAR	ENGRENAGE	1
36	F08-36-0	PUSHER PLATE	POUSSOIR	1
37	Z1/2*5/8*1/2	BUSHING	COUSSINET	2
38	CF10-32*5/8	SCREW	VIS	4
40	S10-32*3/8	SCREW	VIS	1
41	F06-47-0	KNOB	MANETTE	1
42	F08-42-0	BLOCK	BLOC	1
43	F08-43-1	PAPER STRIPPER	LAME D'ARRET	1
44	M10-32*3/8	SCREW	VIS	2
45	C10-32*3/8	SCREW	VIS	1
46	F08-46-0	BRACKET	SUPPORT	1
47	M10-32*3/8	SCREW	VIS	2
48	F08-48-0	FLAT BAR	BARRE	1
55	F08-55-0	RIVET	RIVET	4
56	F08-56-0	IDENTIFICATION PLATE	PLAQUE D'IDENTIFICATION	1
57	F08-57-0	BELL CRANK BLOCK	BLOC	1
58	F08-58-0	JOGGER FRAME WITH 37	BATI DU POUSSOIR AVEC 37	1
59	F08-59-0	JOGGER FRAME WITH 37	BATI DU POUSSOIR AVEC 37	1
60	W1/4	WASHER	RONDELLE	4
61	F08-61-0	BELL CRANK WITH 68,70	BRAS AVEC 68,70	1
62	F08-62-0	PIN	GOUPILLE	1
63	F08-63-0	PIN	GOUPILLE	1
64	F08-64-0	ARM	BRAS	1
65	F08-65-0	ARM	BRAS	1
66	C10-24*3/8	SCREW	VIS	2
67	C CLIP 1/4	RETAINING RING	RONDELLE EN C	2
68	R3/16*1/2	BEARING	ROULEMENT	1
69	WL #10	LOCK WASHER	RONDELLE DE BLOCAGE	2
70	PS3/16*5/8	SPRING PIN	GOUPILLE A RESSORT	1
71	F08-71-0	COLLAR WITH 72,81	COLLET AVEC 72,81	1
72	C1/4-20*5/8	SCREW	VIS	2
73	C CLIP 5/16	RETAINING RING	RONDELLE EN C	1
74	W11/32*9/16*032	WASHER	RONDELLE	2
75	W1/4	WASHER	RONDELLE	2
76	F08-76-0	GUIDE BLOCK	BLOC	1
77	F08-77-0	SPACE BAR	BARRE D'ESPACEMENT	1
78	F08-78-0	FLAT BAR	BARRE	1
79	F08-79-0	SHAFT	AXE	1
80	F08-80-0	SHAFT WITH 5,6	AXE AVEC 5,6	1
81	RN5/16*1/2	NEEDEL BEARING	ROULEMENT	1
82	PG3/16*1 3/8	PIN	GOUPILLE	1
83	PS5/32*1	SPRING PIN	GOUPILLE A RESSORT	1
84	F08-84-1	STUD	VIS D'EPAULEMENT	1
85	B5-16*24*1	SCREW	VIS	1
86	CF5/16-24*1 1/4	SCREW	VIS	1
87	B5-16*24*1 1/4	SCREW	VIS	1
88	C10-24*1	SCREW	VIS	2

FIGURE 8

LIVRAISON A CHAINE & CREMAILLERE
CHAIN DELIVERY & RACK AND GEAR

ITEM	PART NUMBER	DESCRIPTION	DESCRIPTION	QTY
89	P05-07-0	PIN	GOUPILLE	1
90	F08-90-0-B0	GEAR	ENGRENAGE	1
91	W1/4	WASHER	RONDELLE	2
92	CS5/16*1/4	SCREW	VIS	1
93	C10-32*3/4	SCREW	VIS	2
94	F12-15-0-B0	SPACER	ESPACEUR	1
96	C6-32*3/8	SCREW	VIS	1
98	F08-12-0	BLOCK	BLOC	1
99	F08-09-0	BLOCK	BLOC	1
106	W3/16	WASHER	RONDELLE	4
107	W17/32*7/8*1/32	WASHER	RONDELLE	1
110	C1/4-20*5/8	SCREW	VIS	4

FIGURE 9

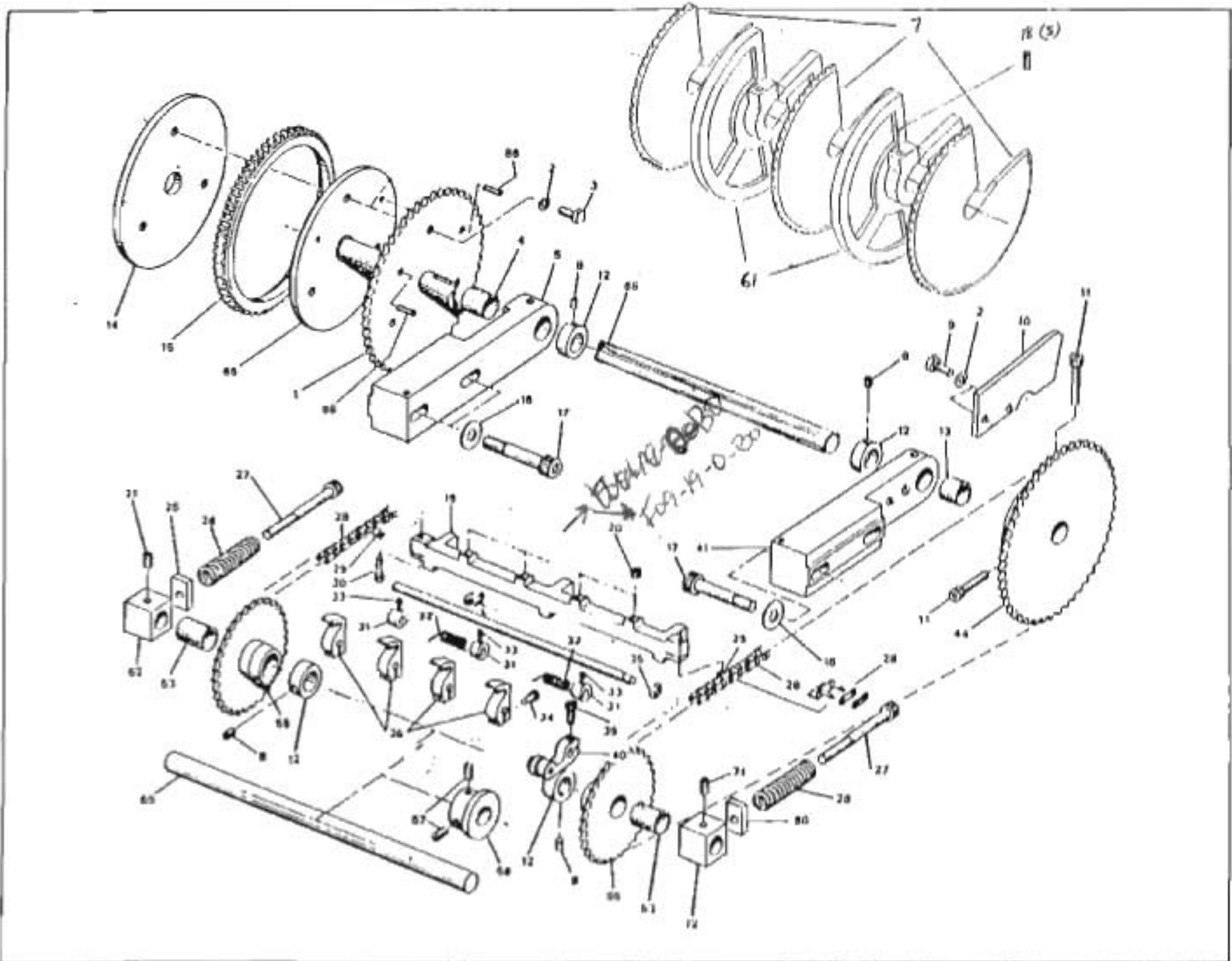


FIGURE 9

LIVRAISON A CHAINE
CHAIN DELIVERY

ITEM	PART NUMBER	DESCRIPTION	DESCRIPTION	QTY
01	ORDER ITEM 65	SPROCKET	PIGNON	1
02	W1/4	WASHER	RONDELLE	3
03	B1/4-28*3/4	SCREW	VIS	3
04	Z5/8*7/8*3/4	BUSHING	COUSSINET	1
05	F09-05-0	SHAFT BRACKET WITH 4	SUPPORT D'ARBRE AVEC 4	1
07	F01-20-0-B1	TOOTHED DISC	DISQUE	3
08	S10-32*3/16	SCREW	VIS	4
09	B1/4-20*3/4	SCREW	VIS	2
10	F09-10-0	CAM	CAME	1
11	C1/4-20*1	SCREW	VIS	2
12	F09-12-0	COLLAR	COLLET	4
13	Z5/8*7/8*5/8	BUSHING	COUSSINET	1
14	F01-28-0	DISK	DISQUE	1
15	F09-15-0	GEAR	ENGRENAGE	1
16	W7/16	WASHER	RONDELLE	4
17	B3/8-16*2 1/4	SCREW	VIS	4
18	SD1/4-20*1	SCREW	VIS	5
19	F09-19-A10	GRIPPER BAR	BARRE	3
20 4x	F01-02-0	RUBBER STOP	CAOUTCHOUC D'ARRET	12
25	F09-25-0	THREADED PLATE	PLAQUE	1
26	F09-26-0	SPRING	RESSORT	2
27	B5/16-18*3 1/2	SCREW	VIS	2
28 (SET)	F09-28-0	CHAIN WITH 29	CHAINE AVEC 29	6
29	F09-29-0-B0	ATTACHMENT LINK	LIEN D'ATTACHE	6
30 2x+4x	C8-32*1/2	SCREW	VIS	6
31 3x	F01-09-0	COLLAR	COLLET	9
32 2x	F01-07-0	SPRING	RESSORT	6
33	S8-32*1/8	SCREW	VIS	9
34	C8-32*1/2	SCREW	VIS	12
35 1x	C CLIP 1/4	RETAINING RING	RONDELLE EN C	3
36 4x	F01-13-0	GRIPPER	PINCE	12
37	R1/4*5/8	BEARING	ROULEMENT	3
38	F09-38-0	PIN	GOUPILLE	3
39	C8-32*1/2	SCREW	VIS	3
40 1x	F09-40-0	ARM ASSY	BRAS ASSEMBLE	3
41	F09-41-0	SHAFT BRACKET OP WITH 13	SUPPORT D'ARBRE OP AVEC 13	1
44	F09-44-0-B0	SPROCKET WITH 11	PIGNON AVEC 11	1
52	F09-52-0	BLOCK	BLOC	1
53	Z5/8*3/4*7/8	BUSHING	COUSSINET	2
55	F09-55-0-B0	SPROCKET WITH 53	PIGNON AVEC 53	2
56	F09-56-0	CAM	CAME	1
57	S1/4-20*1/4	SCREW	VIS	2
59	F09-59-0	SHAFT	AXE	1
61	F09-61-0-B1	LARGE DISK WITH 18	DISQUE AVEC 18	2
62 1x	F09-62-0	SHAFT	AXE	3
63	F09-63-0	DOUBLE LINK	LIEN	6
64	F09-64-0	LINK	LIEN	6
65	F09-65-A10	ITEM 65,01, ,86 ASSY	ITEM 65,01, ,86 ASS.	1
71	S1/4-20*1/4	SCREW	VIS	2
72	F09-72-0	BLOCK	BLOC	1
80	F09-25-0	SPACER	ESPACEUR	1
86	PS5/32*1/2	SPRING PIN	GOUPILLE A RESSORT	2

19 1x F09-19-0-B0 GRIPPER BAR
SEULEMENT

COGNEUR HORIZONTAL
HORIZONTAL JOGGER

FIGURE 10

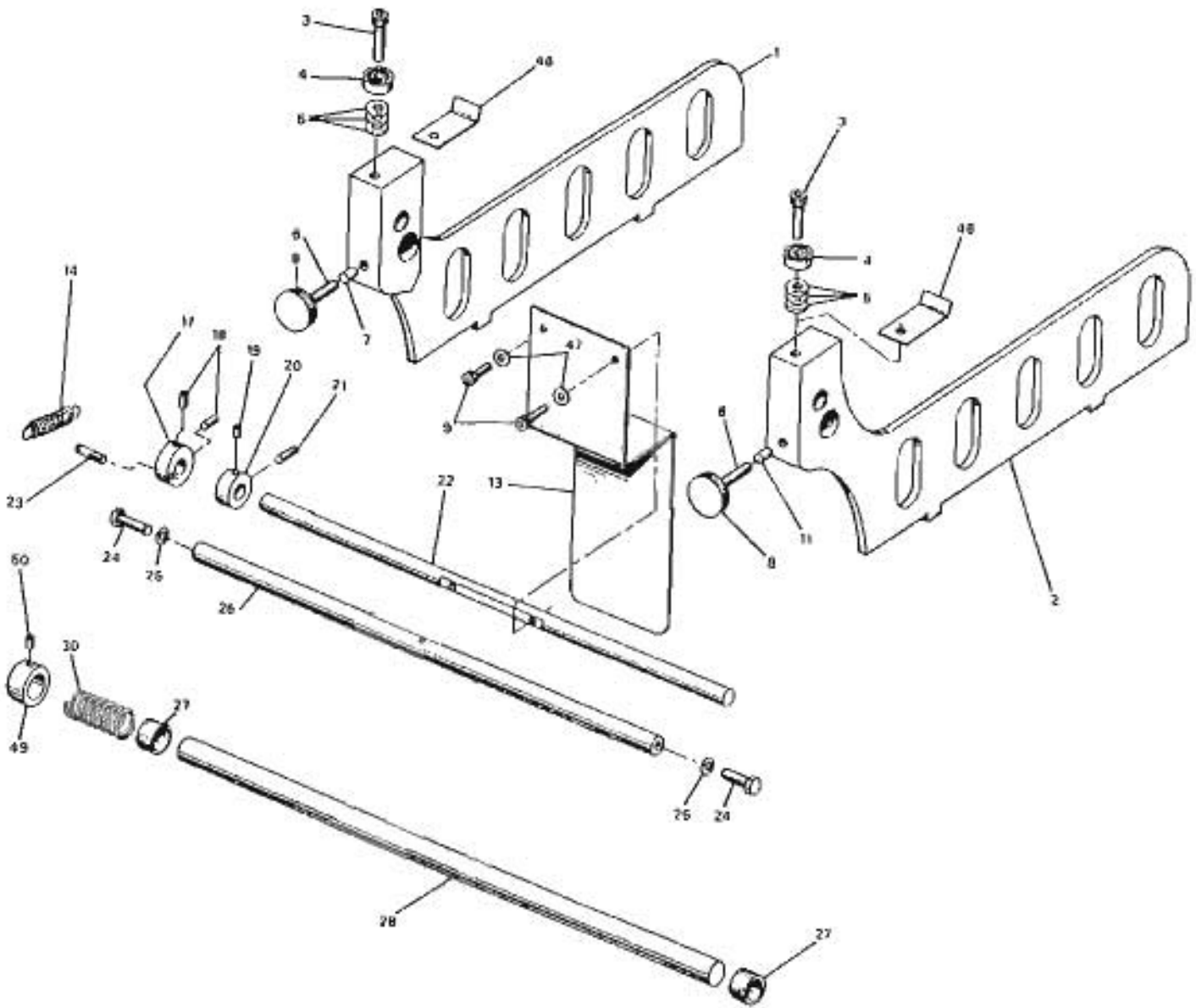


FIGURE 10

COGNEUR HORIZONTAL
HORIZONTAL JOGGER

ITEM	PART NUMBER	DESCRIPTION	DESCRIPTION	QTY
01	F10-01-0-B0	GUIDE ARM	BRAS	1
02	F10-02-0-B0	GUIDE ARM	BRAS	1
03	F10-03-0-B0	SCREW	VIS	2
04	R1/4*3/4	BEARING	ROULEMENT	2
05	W1/4	WASHER	RONDELLE	10
06	C1/4-20*1	SCREW	VIS	2
07	F10-07-0	NYLON ROD	MORCEAU DE NYLON	1
08	F10-08-0	KNOB WITH 6	MANETTE AVEC 6	1
09	C10-32*3/8	SCREW	VIS	2
11	F10-11-0	NYLON ROD	MORCEAU DE NYLON	1
12	F10-08-1	KNOB	MANETTE	1
13	F10-13-0	OUTFEED DOOR	PORTE	1
14	F10-14-0	SPRING	RESSORT	1
17	F10-17-0	SPRING KNOB WITH 23	MANETTE DE TENSION AVEC 23	1
18	S10-32*5/16	SCREW	VIS	2
19	S10-32*3/16	SCREW	VIS	1
20	F10-20-0	COLLAR	COLLET	1
21	S10-32*3/4	SCREW	VIS	1
22	F10-22-0	SHAFT	AXE	1
23	PG3/16*1	PIN	GOUPILLE	1
24	B1/4-20*1	SCREW	VIS	2
25	W1/4	WASHER	RONDELLE	2
26	F10-26-0	TIE ROD	TIGE	1
27	Z5/8*7/8*1/2	BUSHING	COUSSINET	2
28	F10-28-3	JOG SHAFT	AXE VIBRANT	1
30	F10-30-0	SPRING	RESSORT	1
46	F10-46-0	RETAINER	PLAQUE	2
47	W3/16	WASHER	RONDELLE	2
49	F09-12-0	COLLAR	COLLET	1
50	S10-32*3/16	SCREW	VIS	1

FIGURE 11

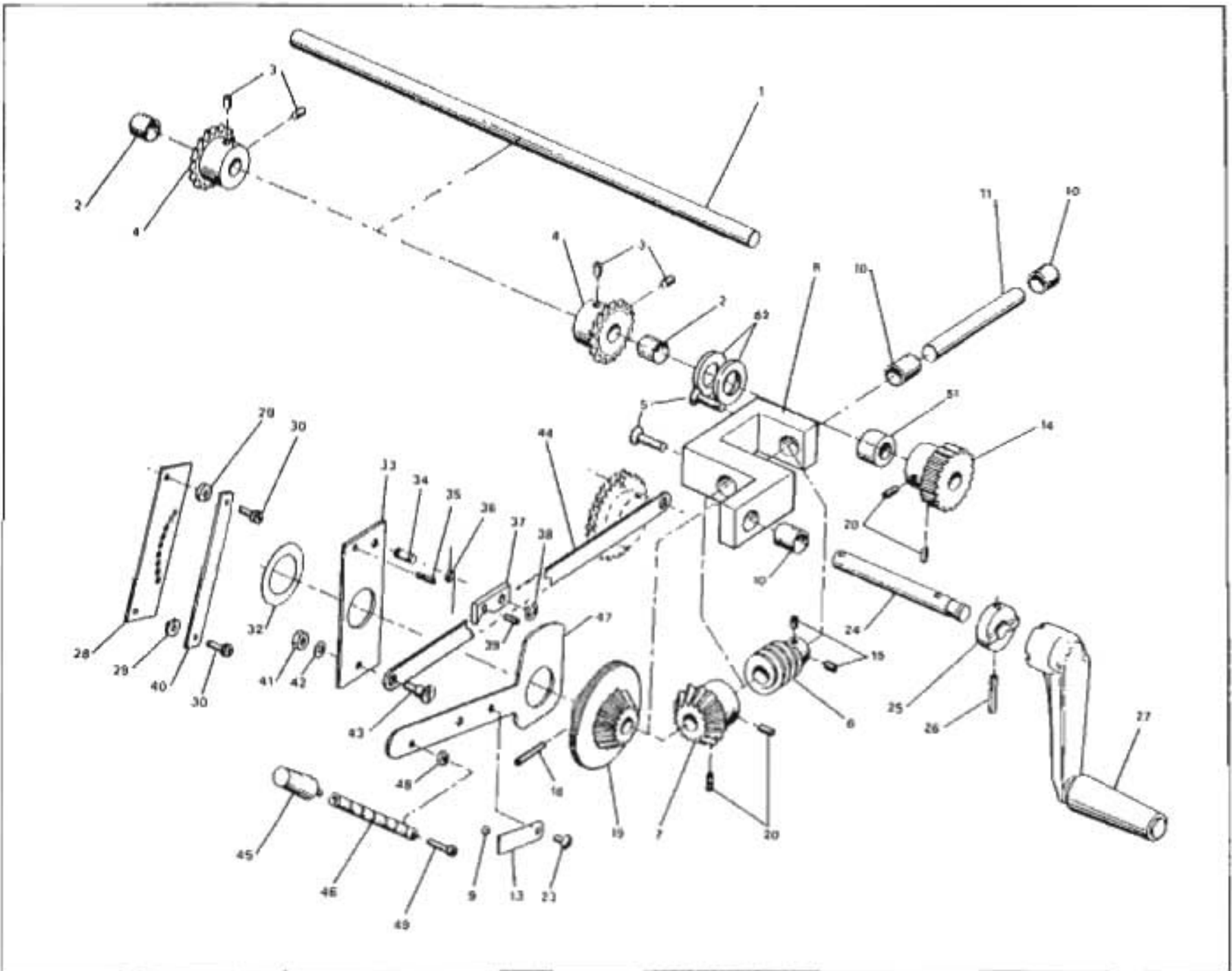


FIGURE 11

MECANISME DE LA TABLE RECEPTRICE
RECEIVING TABLE MECHANISM

ITEM	PART NUMBER	DESCRIPTION	DESCRIPTION	QTY
01	F11-01-0	SHAFT	AXE	1
02	Z1/2*5/8*1/2	BUSHING	COUSSINET	2
03	S1/4-20*1/4	SCREW	VIS	4
04	F11-04-0	SPROCKET	PIGNON	2
05	CP1/4-20*3/4	SCREW	VIS	2
06	F11-06-0-B0	GEAR	ENGRENAGE	1
07	F11-07-0-B0	BEVEL GEAR	ENGRENAGE	1
08	F11-08-A10	BRACKET WITH 10	SUPPORT AVEC 10	1
09	F11-09-0	BALL	BILLE	1
10	Z1/2*5/8*1/2	BUSHING	COUSSINET	3
11	F11-11-0	SHAFT	AXE	1
13	F11-13-0	BALL RETAINER	PLAQUETTE	1
14	F11-14-0	GEAR	ENGRENAGE	1
15	S10-32*3/16	SCREW	VIS	2
16	PS1/8*1/4	SPRING PIN	GOUPILLE A RESSORT	1
**19	F11-19-A20	ITEM *19,08 ASSY	ITEM *19,08 ASSY	1
*19	F11-19-A10	ITEM 19,16,25,26,24	ITEM 19,16,25,26,24	1
20	S10-32*3/8	SCREW	VIS	4
23	M10-32*1/4	SCREW	VIS	1
24	F11-24-0	SHAFT	AXE	1
25	F11-25-0	HANDLE DRIVER	BUTOIR	1
26	PS1/8*1 1/8	SPRING PIN	GOUPILLE A RESSORT	1
27	F11-27-0	HANDLE ASSEMBLY	POIGNEE	1
28	F11-28-0	BALL STOP PLATE	PLAQUE D'ARRET DE BILLE	1
29	F11-29-0	SPACER	ESPACEUR	2
30	M10-32*5/8	SCREW	VIS	2
32	F11-32-0	SHIM	CALE	1
33	F11-33-0	RATCHET PLATE WITH 34	PLAQUE A CLIQUET AVEC 34	1
34	F11-34-0	PIN	GOUPILLE	1
35	PS1/8*1/2	SPRING PIN	GOUPILLE A RESSORT	1
36	F11-36-0	SPRING	RESSORT	1
37	F11-37-0	RATCHET WITH 39	CLIQUET AVEC 39	1
38	C CLIP 1/4	RETAINING RING	RONDELLE EN C	1
39	PS3/16*1/2	SPRING PIN	GOUPILLE A RESSORT	1
40	F11-40-0	RETAINER BAR	BARRE	1
41	N1/4-20	NUT	ECROU	1
43	CS5/16*5/16	SCREW	VIS	1
44	F11-44-1	RATCHET DRIVE BAR	BARRE	1
45	F11-45-0	KNOB	MANETTE	1
46	F11-46-0	HANDLE ROD	TIGE	1
47	F11-47-0	ADJUSTING BAR	BARRE D'AJUSTEMENT	1
48	N8-32	NUT	ECROU	1
49	C8-32*5/8	SCREW	VIS	1
50	F11-07-0-B1	BEVEL GEAR	ENGRENAGE	1
51	F12-15-0-B1	SPACER	ESPACEUR	1
52	F11-52-0	SPACER	ESPACEUR	2

TABLE RÉCEPTRICE & CHARIOT
RECEIVING TABLE & CARRIAGE

FIGURE 12

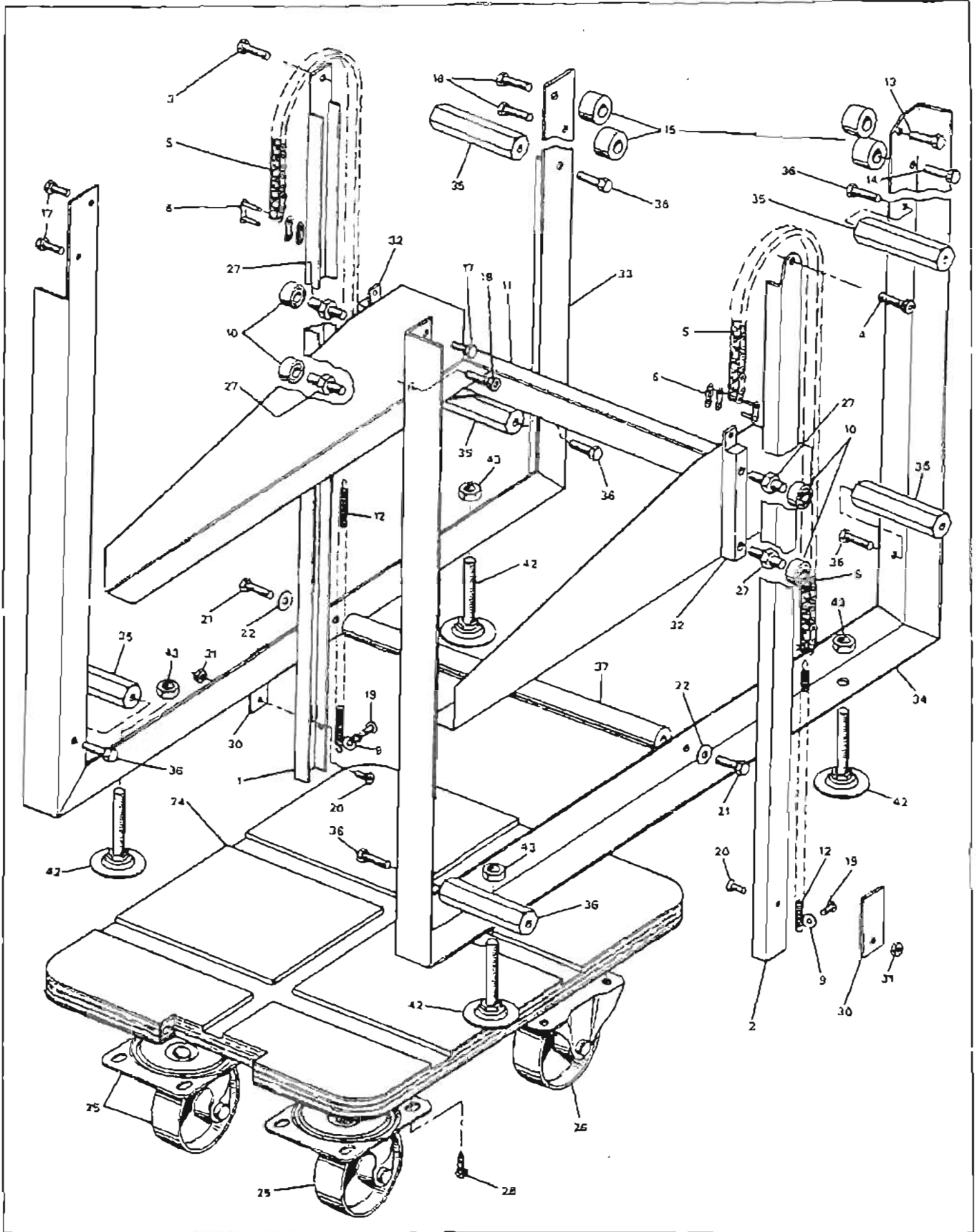


FIGURE 12

TABLE RECEPTRICE & CHARIOT
RECEIVING TABLE & CARRIAGE

ITEM	PART NUMBER	DESCRIPTION	DESCRIPTION	QTY
01	F12-01-0	POST	POTEAU	1
02	F12-02-0	POST	POTEAU	1
03	B1/4-20*1/2	SCREW	VIS	1
04	C1/4-20*1/2	SCREW	VIS	1
05	F12-05-0	CHAIN	CHAINE	2
06	F09-64-0	CONNECTING LINK	LIEN	2
09	W3/16	WASHER	RONDELLE	2
10	R6MM*19MM	BEARING	ROULEMENT	4
11	F12-11-0-B0	TABLE SUPPORT WITH 32	SUPPORT DE TABLETTE AVEC 32	1
12	F12-12-0	SPRING	RESSORT	2
13	B1/4-20*1	SCREW	VIS	1
14	C1/4-20*1	SCREW	VIS	1
15	F12-15-0	SPACER	ESPACEUR	4
16	B1/4-20*1 1/4	SCREW	VIS	2
17	B1/4-20*1/2	SCREW	VIS	3
18	C1/4-20*1/2	SCREW	VIS	1
19	M10-32*1/4	SCREW	VIS	2
20	CF8-32*5/8	SCREW	VIS	2
21	B5/16-18*5/8	SCREW	VIS	2
22	W5/16	WASHER	RONDELLE	2
*24	F12-24-A10	ITEM 24, 25, 26, 28 ASSY	ITEM 24, 25, 26, 28 ASS.	1
24	F12-24-0	TABLE	TABLETTE	1
25	F12-25-0	SWIVEL WHEEL	ROUE PIVOTANTE	2
26	F12-26-0	WHEEL	ROUE	2
27	F12-27-0	BEARING PIN	AXE DE ROULEMENT	4
28	MP5/8	SCREW	VIS	16
30	F12-30-0	BLOCK	BLOC	2
31	N8-32	NUT	ECROU	2
32	F12-32-0	SIDE SUPPORT	SUPPORT	2
33	F12-33-0-B0	PAINTED FRAME	BATI	1
34	F12-34-0-B0	PAINTED FRAME	BATI	1
35	F12-35-0	HEXAGONAL STUD	VIS A EPAULEMENT	6
36	B1/4-20*1/2	SCREW	VIS	6
37	F12-37-0	SPACE BAR	BARRE D'ESPACEMENT	1
42	F12-42-0	LEVELLING FEET	PIED D'AJUSTEMENT	4
43	N3/8-16	NUT	ECROU	4
44	F12-44-0	HEXAGONAL STUD	VIS A EPAULEMENT	4
45	B5/16-18*5/8	SCREW	VIS	4

PROTECTEURS - LIVRAISON À CHAINES
GUARDS - CHAIN DELIVERY

FIGURE 13

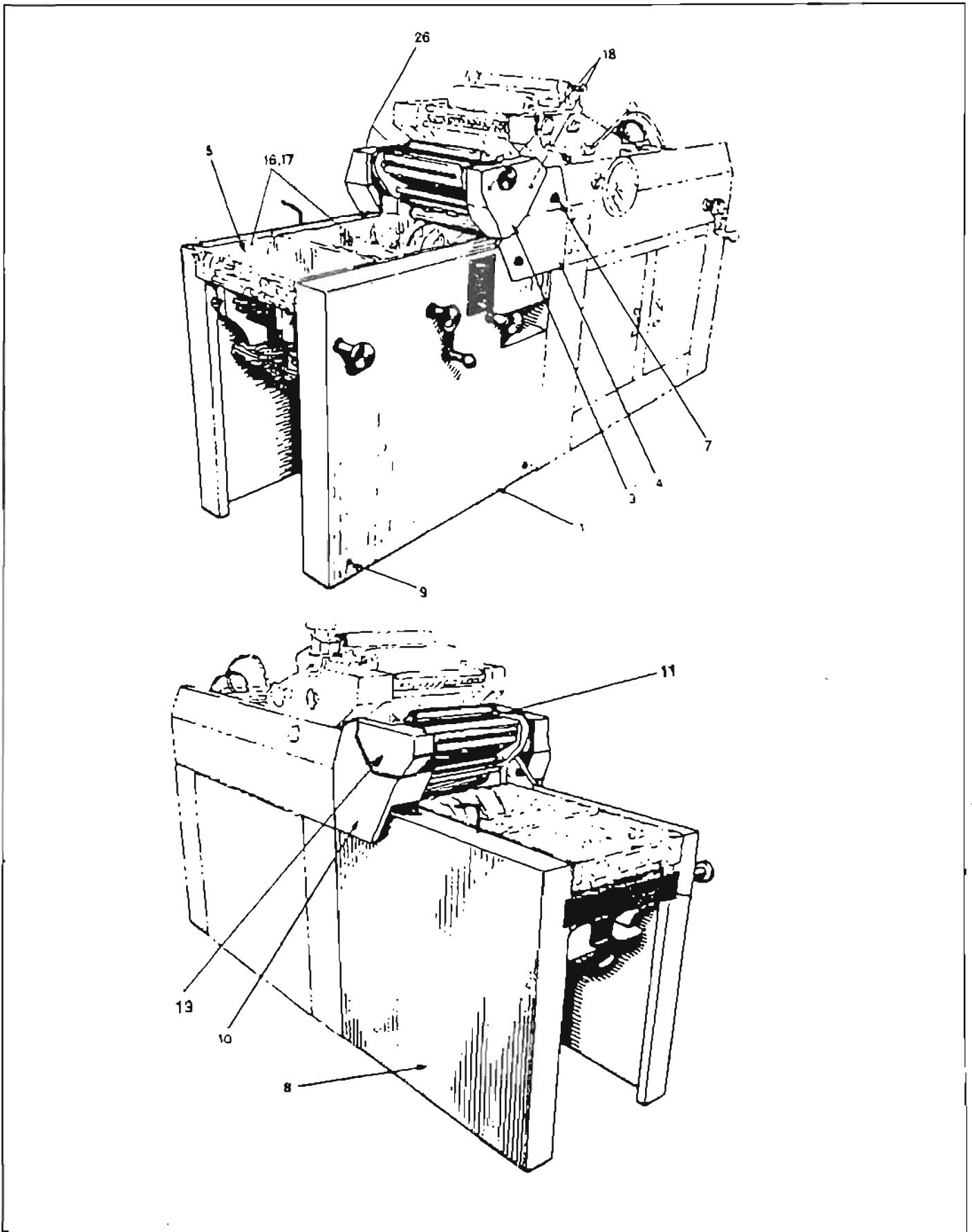


FIGURE 13

GUARDS - PROTECTEURS

ITEM	PART NUMBER	DESCRIPTION	DESCRIPTION	QTY
01	F13-01-0-00	LARGE COVER OP	GRAND COUVERCLE OP	1
02	S10-32*3/4	SCREW	VIS	1
03	F13-03-0-00	SMALL COVER OP	PETIT COUVERCLE OP	1
04	F13-04-0-00	MEDIUM COVER OP	MOYEN COUVERCLE OP	1
05	F13-05-0	TRANSPARENT COVER	COUVERCLE TRANSPARENT	1
07	F13-07-0	KNOB	MANETTE	4
08	F13-08-0-00	LARGE COVER NOP	GRAND COUVERCLE NOP	1
09	C1/4-20*1/2	SCREW	VIS	6
10	F13-10-0-00	MEDIUM COVER	MOYEN COUVERCLE	1
11	F13-11-0	PAINTED COVER	COUVERCLE GRILLE	1
15	F13-15-0-00	PAINTED COVER	COUVERCLE	1
16	C10-32*3/8	SCREW	ITEM 04, 10, 03, 19, 01, 08 ASSY	4
17	W3/16	WASHER	VIS	4
18	C10-32*3/8	SCREW	RONDELLE	4
19	F13-19-0-00	SMALL COVER NOP	VIS	2
20	F06-47-0	KNOB	COUVERCLE NOP	1
21	F13-21-0	SPACER	MANETTE	1
26	C10-32*3/8	SCREW	ESPACEUR	1
			VIS	1

F13-680 SUPPORT GRID

FIGURE 14A

ELECTRICAL SYSTEM
SYSTEME ELECTRIQUE

ITEM	PART NUMBER	DESCRIPTION	DESCRIPTION	QTY
01	F14-01-1	ELECTRICAL BOX	BOITE ELECTRIQUE	1
02	F14-02-0	SOLENOID	SOLENOIDE	2
03	M8-32*3/8	SCREW	VIS	3
04	N8-32	NUT	ECROU	3
15	F14-15-1	CIRCUIT-BREAKER	DISJONCTEUR	1
16	F14-16-0	SWITCH ITEM 18 INCLUDED	INTERRUPTEUR ITEM 18 INCLUS	1
18	F14-18-0	YELLOW SWITCH COVER	COUVERCLE JAUNE	1
35	C1/4-20*3/8	SCREW	VIS	2
41	F14-41-0	SWITCH BOX	BOITE	4
44	W3/16	WASHER	RONDELLE	14
45	F14-45-0	SWITCH	INTERRUPTEUR	3
46	C10-32*3/8	SCREW	VIS	8
50	M6-32*1	SCREW	VIS	4
54	F14-54-0	RELAY	RELAIS	3
55	F14-55-0	TRANSFORMER WIRES INCLUDED	TRANSFORMATEUR FIL INCLUS	1
56	C1/4-20*5/8	SCREW	VIS	2
70	F14-70-0	BLOCK	BLOC	1
71	C1/4-20*1/2	SCREW	VIS	1
83	F14-69-0	SWITCH	INTERRUPTEUR	1
96	F14-96-0	SWITCH BOX	BOITIER	1
97	F14-97-0	TRANSFORMER HOLDER	SUPPORT DU TRANSFORMATEUR	1
98	F14-16-1	SWITCH ITEM 99 INCLUDED	INTERRUPTEUR ITEM 99 INCLUS	1
99	F14-17-1	YELLOW COVER	COUVERCLE JAUNE	1
102	CF1/4-20*3/4	SCREW	VIS	2
103	F08-100-0	HEXAGONAL STUD	VIS D'EPAULEMENT	2
104	C1/4-20*1/2	SCREW	VIS	2
107	MP6*3/8	SCREW	VIS	4
108	C1/4-20*3/8	SCREW	VIS	2

SYSTÈME ÉLECTRIQUE PRINCIPAL
 MAIN ELECTRICAL SYSTEM

FIGURE 14B

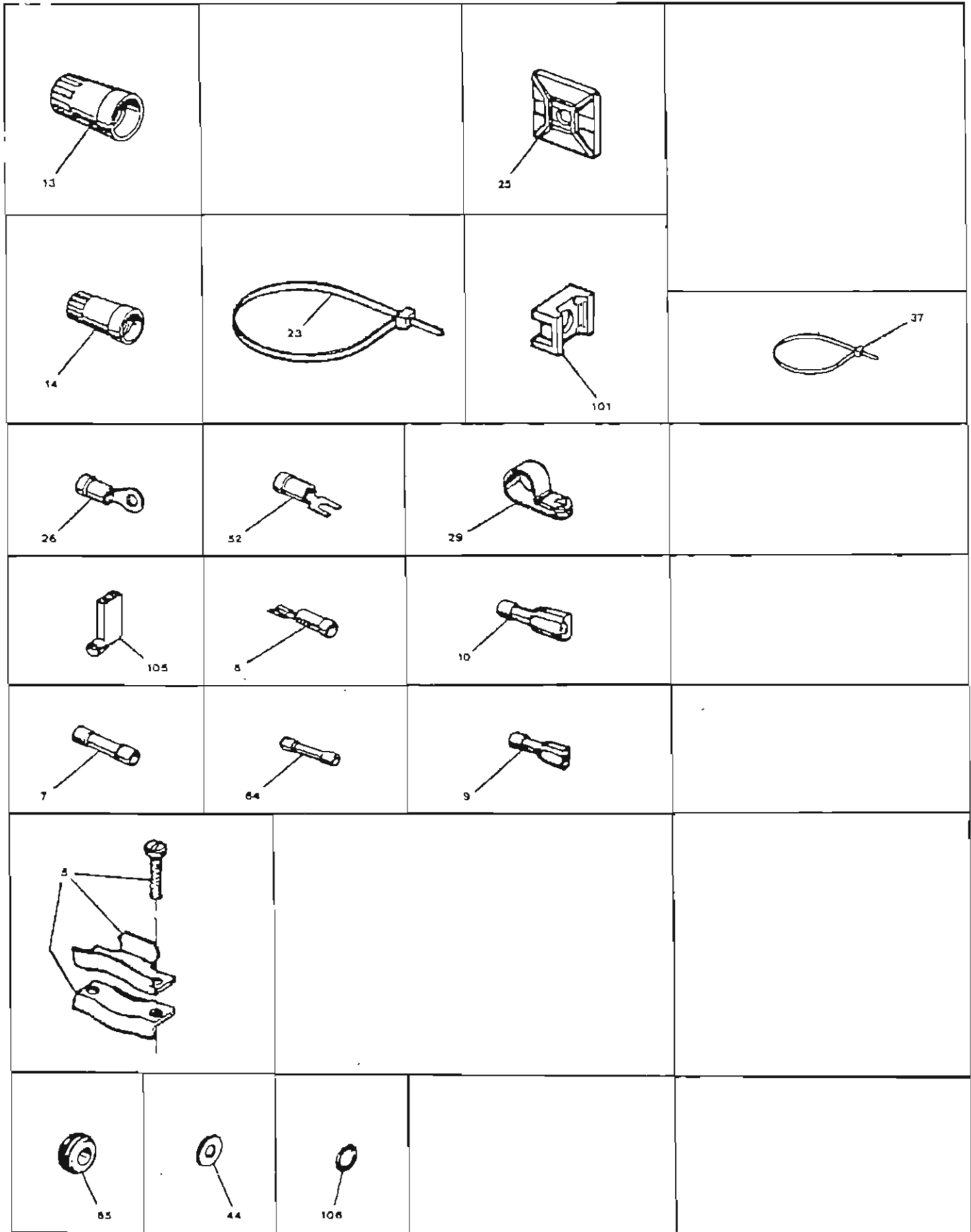
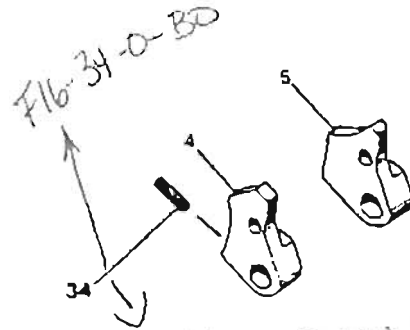
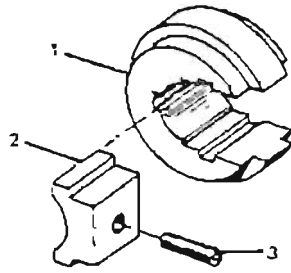


FIGURE 14B

ELECTRICAL SYSTEM
SYSTEME ELECTRIQUE

ITEM	PART NUMBER	DESCRIPTION	DESCRIPTION	QTY
05	F14-05-0	WIRE HOLDER	SERRE FIL	2
06	F14-06-0	TERMINAL	TERMINAL	36
07	F14-07-0	BLUE LINK	LIEN BLUE	4
09	F14-09-0	TERMINAL	TERMINAL	14
10	F14-10-0	TERMINAL	TERMINAL	6
13	F14-13-0	WIRE CONNECTOR	MARETTE	2
14	F14-14-0	WIRE CONNECTOR	MARETTE	1
23	F14-23-0	TIE RAP	ATTACHE	5
25	F14-25-0	TIE RAP HOLDER	SUPPORT D'ATTACHE	4
26	F14-26-0	TERMINAL	TERMINAL	1
29	F14-29-0	CABLE CLAMP	SERRE-FIL	2
37	F14-37-0	TIE RAP	ATTACHE	10
44	W3/16	WASHER	RONDELLE	1
52	F14-52-0	TERMINAL	TERMINAL	3
64	F14-64-0	WIRE LINK	LIEN	4
65	F14-65-0	RUBBER GROMMET	GROMETTE	1
101	F14-101-0	TIE RAP HOLDER	SUPPORT D'ATTACHE	1
105	F14-105-0	TERMINAL	TERMINAL	2
106	F14-106-0	O'RING	ANNEAU	8



USE 509 SCREW 1/4-28x5/8

ELECTRONIC COUNTER AVAILABLE
COMPTEUR ELECTRONIQUE DISPONIBLE
--> F14-110-A12B

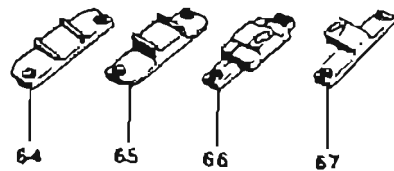
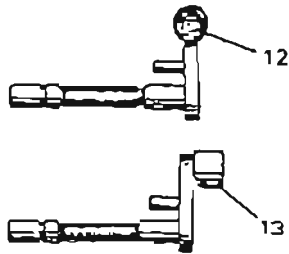
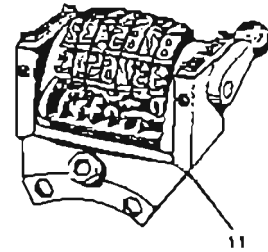
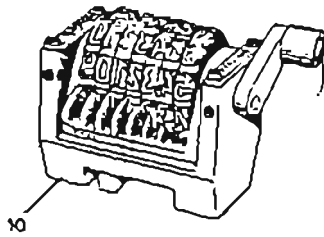
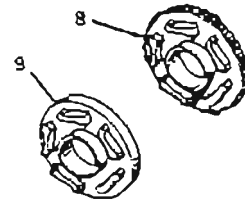
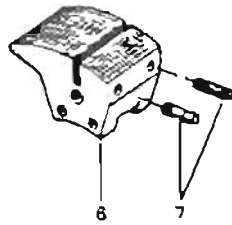


FIGURE 16

ACCESSORIES
ACCESSOIRES

ITEM	PART NUMBER	DESCRIPTION	DESCRIPTION
*01	F16-01-A10	ITEM 01,02,03 ASSEMBLY	ITEM 01,02,03 ASSEMBLES
02	F16-02-0-C0	BLOCK	BLOC
03	SF3/8-16*3/4	SCREW	VIS
04	F16-04-0 -	CAM #0 ITEM 34 INCLUDED	CAME #0 AVEC ITEM 34
05	F16-05-0	CAM #2 ITEM 34 INCLUDED	CAME #2 AVEC ITEM 34
06	F16-06-0	DESIGNATION BLOCK WITH ITEM 7	BLOC DE DESIGNATION AVEC 7
07	S10-32*1	SCREW	VIS
08	PART NUMBER	SKIP WHEEL	ROUE SAUTANTE
	F16-08-2	SKIP 2 STRAIGHT, BACKWARD	SAUTE 2 HORIZONTALE, DECROISSANTE
	F16-08-3	SKIP 3 STRAIGHT, BACKWARD	SAUTE 3 HORIZONTALE, DECROISSANTE
	F16-08-4	SKIP 4 STRAIGHT, BACKWARD	SAUTE 4 HORIZONTALE, DECROISSANTE
	F16-08-5	SKIP 5 STRAIGHT, BACKWARD	SAUTE 5 HORIZONTALE, DECROISSANTE
	F16-08-6	SKIP 6 STRAIGHT, BACKWARD	SAUTE 6 HORIZONTALE, DECROISSANTE
	F16-73-2	SKIP 2 STRAIGHT, FORWARD	SAUTE 2 HORIZONTALE, CROISSANTE
	F16-73-3	SKIP 3 STRAIGHT, FORWARD	SAUTE 3 HORIZONTALE, CROISSANTE
	F16-73-4	SKIP 4 STRAIGHT, FORWARD	SAUTE 4 HORIZONTALE, CROISSANTE
	F16-73-5	SKIP 5 STRAIGHT, FORWARD	SAUTE 5 HORIZONTALE, CROISSANTE
	F16-73-6	SKIP 6 STRAIGHT, FORWARD	SAUTE 6 HORIZONTALE, CROISSANTE
	F16-74-2	SKIP 2 CONVEX, BACKWARD	SAUTE 2 VERTICALE, DECROISSANTE
	F16-74-3	SKIP 3 CONVEX, BACKWARD	SAUTE 3 VERTICALE, DECROISSANTE
	F16-74-4	SKIP 4 CONVEX, BACKWARD	SAUTE 4 VERTICALE, DECROISSANTE
	F16-74-5	SKIP 5 CONVEX, BACKWARD	SAUTE 5 VERTICALE, DECROISSANTE
	F16-74-6	SKIP 6 CONVEX, BACKWARD	SAUTE 6 VERTICALE, DECROISSANTE
	F16-75-2	SKIP 2 CONVEX, FORWARD	SAUTE 2 VERTICALE, CROISSANTE
	F16-75-3	SKIP 3 CONVEX, FORWARD	SAUTE 3 VERTICALE, CROISSANTE
	F16-75-4	SKIP 4 CONVEX, FORWARD	SAUTE 4 VERTICALE, CROISSANTE
	F16-75-5	SKIP 5 CONVEX, FORWARD	SAUTE 5 VERTICALE, CROISSANTE
	F16-75-6	SKIP 6 CONVEX, FORWARD	SAUTE 6 VERTICALE, CROISSANTE
09	PART NUMBER	REPEAT WHEEL	MOLETTE DE REPETITION
	F16-09-2	REPEAT 2	2 REPETITIONS
	F16-09-3	REPEAT 3	3 REPETITIONS
	F16-09-4	REPEAT 4	4 REPETITIONS
	F16-09-5	REPEAT 5	5 REPETITIONS
	F16-09-6	REPEAT 6	6 REPETITIONS

FIGURE 16

ACCESSORIES
ACCESSOIRES

ITEM	PART NUMBER	DESCRIPTION	DESCRIPTION
10	F16-10-B	NUMBERING HEAD, 7 DIGITS HORIZONTAL (STRAIGHT) 3/16" GOTHIC ENGRAVING BACKWARD	TETE A NUMEROTER, 7 POSITIONS HORIZONTALE CARACTERE GOTHIQUE 3/16" DECROISSANTE
10	F16-10-F	NUMBERING HEAD, 7 DIGITS HORIZONTAL (STRAIGHT) 3/16" GOTHIC ENGRAVING FORWARD	TETE A NUMEROTER, 7 POSITIONS HORIZONTALE CARACTERE GOTHIQUE 3/16" CROISSANTE
11	F16-11-B	NUMBERING HEAD, 7 DIGITS VERTICAL (CONVEX) 3/16" GOTHIC ENGRAVING BACKWARD	TETE A NUMEROTER, 7 POSITIONS VERTICALE CARACTERE GOTHIQUE 3/16" DECROISSANTE
11	F16-11-F	NUMBERING HEAD, 7 DIGITS VERTICAL (CONVEX) 3/16" GOTHIC ENGRAVING FORWARD	TETE A NUMEROTER, 7 POSITIONS VERTICALE CARACTERE GOTHIQUE 3/16" CROISSANTE
12	F16-12-0	PREFIX OPERATING ARM (CONVEX)	BRAS VERTICAL CONVEX
	F16-12-1	UNIT OPERATING ARM (CONVEX)	BRAS VERTICAL UNIT
13	F16-13-0	PREFIX OPERATING ARM STRAIGHT	BRAS HORIZONTAL PREFIX
	F16-13-1	UNIT OPERATING ARM (STRAIGHT)	BRAS HORIZONTAL UNIT
34	F16-34-0-B0	SCREW IN CAM #0 AND #2	SCREW IN CAME #0 AND #2
64	F16-64-0	CONVEX DIE (FOR RUBBER SLIDE)	MATRICE VERTICALE POUR GRAVURE EN CAOUTCHOUC
65	F16-65-0	STRAIGHT DIE FOR RUBBER SLIDE	MATRICE HORIZONTALE POUR GRAVURE EN CAOUTCHOUC
66	F16-66-0	STRAIGHT DIE WITH INTERCHANGEABLE SLIDE	MATRICE HORIZONTALE AVEC GRAVURE INTERCHANGEABLE
67	F16-67-0	CONVEX DIE WITH ENGRAVED SLIDE	MATRICE VERTICALE AVEC GRAVURE FIXE
N.S.	F16-14-0	FOAM BOX	BOITE DE MOUSSE
N.S.	F16-15-0	DOUBLE SIDE TAPE	RUBAN ADHESIF A DEUX COTES
N.S.	F16-26-A10	ITEM 26,27,28,29,30,31 ASSY	ITEM 26,27,28,29,30,31 ASS.
N.S.	A KEY 5/64	ALLEN KEY 5/64	CLE ALLEN 5/64
N.S.	A KEY 3/32	ALLEN KEY 3/32	CLE ALLEN 3/32
N.S.	A KEY 1/8	ALLEN KEY 1/8	CLE ALLEN 1/8
N.S.	A KEY 9/64	ALLEN KEY 9/64	CLE ALLEN 9/64
N.S.	A KEY 5/32	ALLEN KEY 5/32	CLE ALLEN 5/32
N.S.	A KEY 3/16	ALLEN KEY 3/16	CLE ALLEN 3/16
N.S.	F16-46-0	SET OF LABELS BLACK	ENSEMBLE DES COLLANTS NOIRS
N.S.	F16-47-0	SCALE FOR RING HOLDER BLACK	ECHELLE POUR CAME DE SUPPORT
N.S.	F16-47-2	SCALE FOR RING HOLDER WHITE	ECHELLE POUR CAME DE SUPPORT
N.S.	F16-61-0	MASKING TAPE	RUBAN ADHESIF
N.S.	F16-62-0	TOOL SHAFT	AXE POUR TETE A NUMEROTER
N.S.	F03-51-0-B0	NYLON WHEEL WITH O'RING	ROUE DE NYLON AVEC O'RING

PART NUMBER	HORIZONTAL PERFORATION BLADE 18" (45 CM)	LAME DE PERFORATION HORIZONTALE 18" (45 CM)
F16-16-2	2MM TEETH	DENTS 2MM
F16-16-4	4MM TEETH	DENTS 4MM
F16-16-8	8MM TEETH	DENTS 8MM

PART NUMBER	VERTICAL PERFORATION BLADE	LAME DE PERFORATION VERTICALE
F16-17-0	6 TEETH PER INCH 6' (1.8M)	6 DENTS PAR POUCE 6' (1.8M)
F16-17-1	8 TEETH PER INCH 6' (1.8M)	8 DENTS PAR POUCE 6' (1.8M)
F16-17-2	12 TEETH PER INCH 6' (1.8M)	12 DENTS PAR POUCE 6' (1.8)
F16-17-3	16 TEETH PER INCH 6' (1.8M)	16 DENTS PAR POUCE 6' (1.8M)
F16-18-0	6 TEETH PER INCH, 20' (6M)	6 DENTS PAR POUCE, 20' (6M)

PART NUMBER	SCORING	SCORING
F16-21-0 (*)	HORIZONTAL STRIP 18" (45CM)	LAME HORIZONTALE (45 CM)
F16-20-0	VERTICAL STRIP 6' (1.8M)	LAME VERTICALE 6' (1.8M)
F16-60-0	VERTICAL STRIP 20' (6M)	LAME VERTICALE 20' (1.8M)

PART NUMBER	SLITTING	RAINURAGE
F16-21-0 (*)	HORIZONTAL STRIP 18" (45CM)	LAME HORIZONTALE (45 CM)
F16-20-1	VERTICAL STRIP 6' (1.8M)	LAME VERTICALE 6' (1.8M)
F16-24-0	VERTICAL STRIP 20' (6M)	LAME VERTICALE 20' (1.8M)

ACCESSOIRES FOR MONA

F18-28-A10 BALL SCREW DRIVER HEX 3/32

A KEY 5/64, 3/32, 1/8, 9/64, 5/32, 3/16 F18-55-0

COMPTON/REPETITION ELECTRONIQUE ELECTRONIC REPEAT COUNTER

PERFORATION VERTICAL (BOITE) VERTICAL PERFORATION BOX

1377-A10

SCORING WHEEL PERFORATION WHEEL SLITTING WHEEL

HORIZ PERFORATION BLADE 18" HORIZ SCORING/SLITTING BLADE 18"

KEY 7mm F18-32-0

GUIDE DE PAPIER AVEC NUMEROTISSEUR PAPER GUIDE (NUMBERING SHAFT)

1378 MYLAR TAPE F18-15-0 RUBAN COLLANT DEUX COTES NOTE SIDED TAPE F16-14-0 FOAM TAPE F16-33-0-80 BALLENGE (PETIT PAPIER) BACK JOGGER EXTENSION

DESIGNATION SUR MESURE CUSTOM MADE INPRINT

*VOIR LES LISTES POUR DIF. CHOIX OU DEMANDER AU DEPT. DES PIECES.
*SEE LIST FOR VARIOUS CHOICE OR ASK PARTS DEPT.